

Installing Nikon View 4 on a Macintosh

Installing Nikon View 4 for the COOLPIX5000/995/885/775/990/880

Nikon View 4 includes an image database application. Before installing Nikon View 4, install any image database software that you intend to use in combination with Nikon View 4.

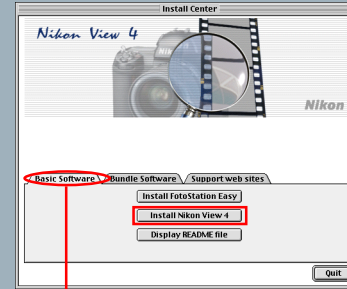
Step 1—Install Bundled Software

Image Database Software

If the user wishes to use image database software, the software must be installed before installing Nikon View 4.

Bundled Software may differ according to the country or area of purchase and model of camera.

Step 2—Install Nikon View 4



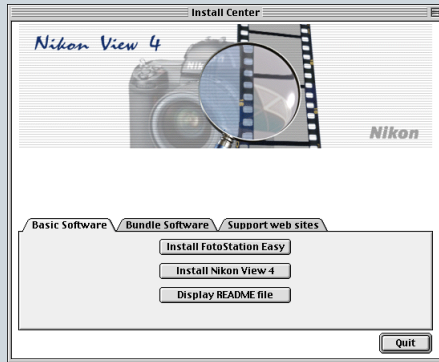
Install Nikon View 4

Basic Software tab

Click [here](#)  to proceed to the next step.

After starting your computer, insert the Nikon View 4 CD into the CD-ROM drive. The Nikon View Welcome program will be launched automatically. Select a language from the pop-up menu that appears and click **Next**. The Install Center window (Welcome window) will then appear. The Welcome window has three tabs: the Basic Software tab, the Bundle Software tab, and the Support web sites tab.

Basic Software



Install FotoStation Easy

- Click to install FotoStation Easy

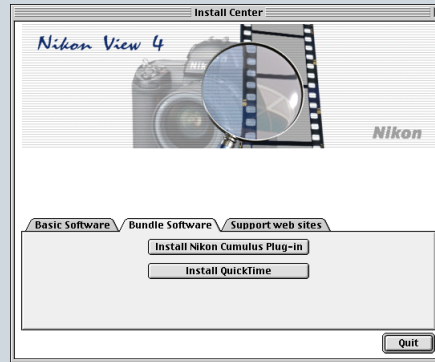
Install Nikon View 4

- Click to install Nikon View 4

Display README file

- Click to view the ReadMe file

Bundle Software



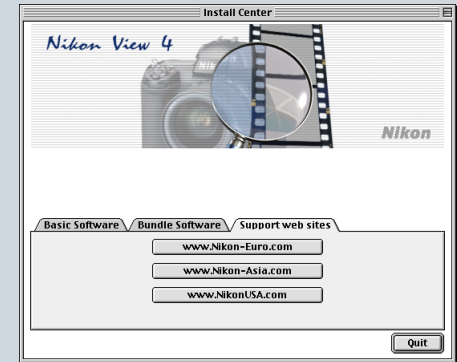
Install Nikon Cumulus Plug-in

- Click to install the Nikon filter for Cumulus image database software

Install QuickTime

- Click to install the QuickTime 4.1.2 movie player

Support web sites



Click this button to view the Nikon technical support web site for your area (your computer must be configured for connection to the Internet)

www.Nikon-Euro.com

- For users in Europe

www.Nikon-Asia.com

- For users in Asia, Oceania, the Middle East, and Africa

www.NikonUSA.com

- For users in the United States of America

Basic Software and Bundled Software may differ according to the country or area of purchase and model of camera.

Quit


- Click this button to close the Welcome window

Click [here](#)  to proceed to the next step.

Step I—Install Bundled Software

Before installing Nikon View 4, install any image database software you intend to use in combination with Nikon View 4.

I-1: Install image database software

Please install the image database software that you intend to use in combination with Nikon View 4. If you intend to install Cumulus 5.0 click [here](#) .

If you have already installed image database software, proceed to the next step.

Bundled Software may differ according to the country or area of purchase and model of camera.

Click [here](#)  to proceed to the next step.



Image Database Applications

The following applications are supported under Nikon View 4:

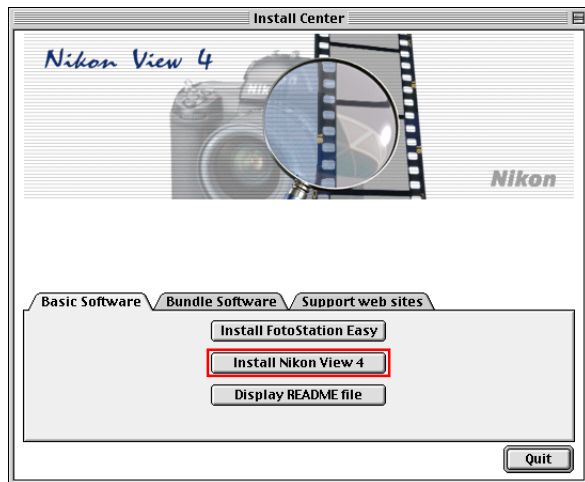
- **Cumulus 5.0** (Canto Software): images registered in catalog
- FotoStation 4.0 (FotoWare): images registered in folder
- iViewMediaPro (iView Multimedia): images registered in catalog

Step 2—Install Nikon View 4

After installing image database software, you are ready to install Nikon View 4.

2-1: Start the Nikon View 4 installer

Click **Install Nikon View 4** in the Basic Software tab of the Welcome window to begin installation of Nikon View 4.



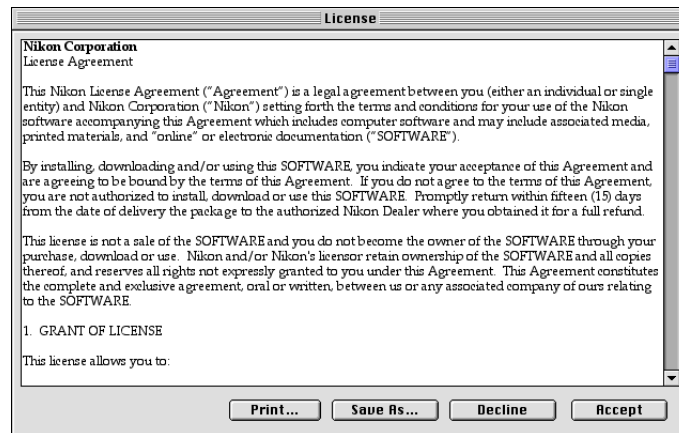
Existing Versions of Nikon View

If an older version of Nikon View is already installed on your computer, it will be automatically overwritten when the new version is installed.

Nikon View 4 does not support connection of COOLPIX950, 900s, 900, 800, or 700 digital cameras. Nikon View 4 can however be used to view the photographs taken with these cameras when the camera memory card is inserted in a COOLPIX5000, 995, 885, 775, 990 or 880 digital camera.

2-2: Accept the license agreement

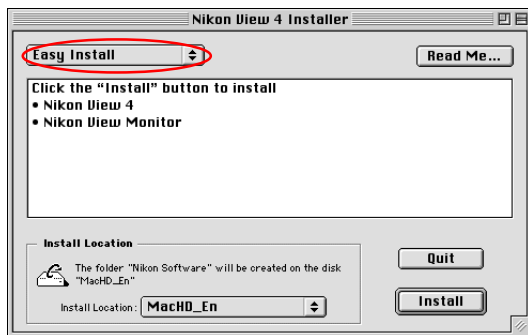
The license agreement is displayed at the start of installation. After reading the agreement, click **Accept** to display the ReadMe file. Take a few moments to view this file, which may contain important information that could not be included in this manual.



Click [here](#)  to proceed to the next step.

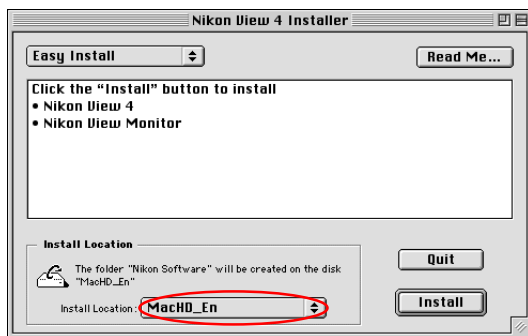
2-3: Select the installation type

Choose **Easy Install** from the pop-up menu at the top left corner of the Nikon View Installer dialog.



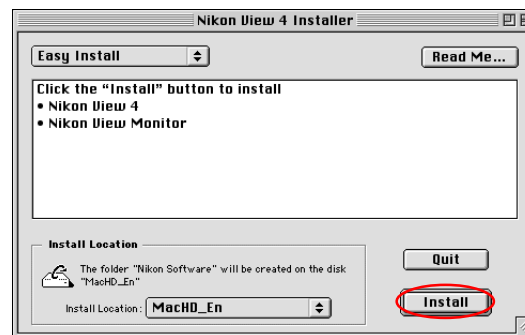
2-4: Choose a location for Nikon View 4

The disk and folder to which Nikon View 4 will be installed are shown in the Install Location panel. Choose a new disk from the **Install Location** pop-up menu, or choose **Select Folder...** to navigate to the desired location.



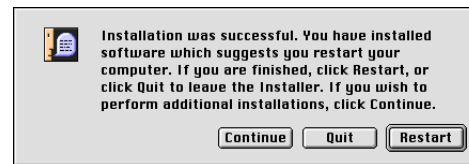
2-5: Start installation

To install Nikon View 4 to the selected location, click the **Install** button in the Nikon View Installer dialog. A progress meter will be displayed during installation.



2-6: Quit the installer

When installation is complete, the dialog shown below will be displayed. Click the **Restart** button to restart your computer.



Click [here](#)  to return to the Nikon View 4 Reference Manual.