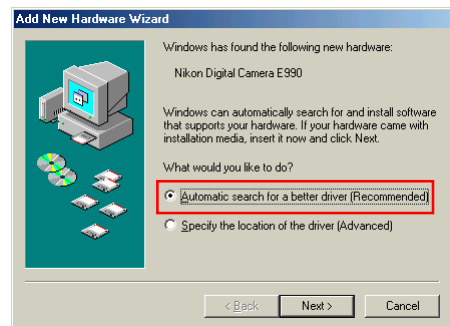


Registering the COOLPIX990/880 under Windows Millennium Edition (Me)

The following explanation uses COOLPIX990 as an example. Registration for the COOLPIX880 follows exactly the same procedure. The dialog boxes may however show slight differences.

Step 1

Install Nikon View 4 and restart your computer. Once Windows has restarted, turn on the camera and connect it to the computer using a USB cable. The opening dialog for the Windows Add New Hardware Wizard will be displayed. Holding down the shift key to prevent the Welcome dialog from opening automatically, insert the Nikon View 4 CD into the CD-ROM drive. Confirm that “Automatic search for a better driver” is selected, and click **Next**. The wizard will automatically install the necessary drivers.



If the Welcome dialog appears when the CD-ROM is inserted, close the dialog by clicking the **Quit** button.

Installing Windows Hardware Drivers for the COOLPIX990/880

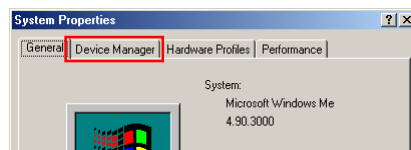
Step 2

The dialog shown below will be displayed; click **Finish**.



Step 3

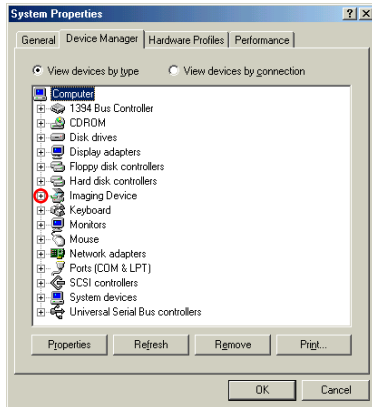
Once registration is complete, check that the camera has been correctly registered with the system. Click the My Computer icon on the desktop with the right mouse button and select Properties from the menu that appears. The System Properties dialog will be displayed; click the Device Manager tab.



[Click here](#)  to proceed to the next step.

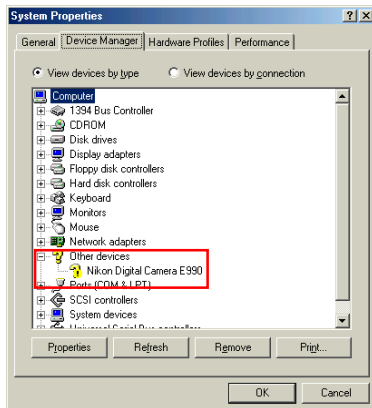
Step 4

The Device Manager sheet will be displayed. After confirming that “Imaging Device” is listed in the Device Manager, click the “+” sign to its left.



If Imaging Device does not appear

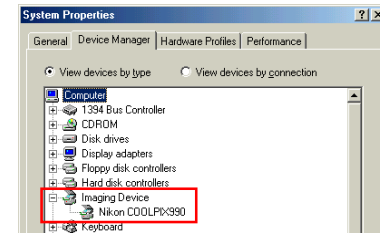
If “Nikon Digital Camera E990” is listed under “Other devices”, click [here](#) .



If “Imaging Device” is not listed in the Device Manager and “Nikon Digital Camera E990” is not listed under “Other devices”, re-start your computer and return to [Step 1](#).

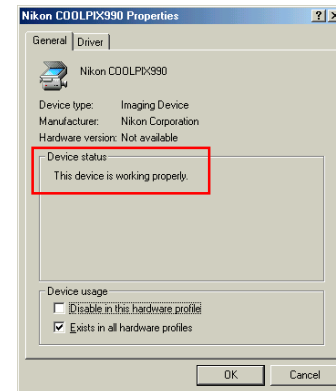
Step 5

After confirming that “Nikon COOLPIX990” is listed under “Imaging Device,” double click the listing to open the Properties window.



Step 6

The Nikon COOLPIX990 Properties dialog will be displayed. Click the General tab and confirm that “This device is working properly” appears under “Device status.” Click **OK**.



Click **OK** to close the System Properties Dialog. Device registration is now complete.

Click [here](#)  to return to the Nikon View 4 Reference Manual.