

4X Ø M4X0.7 ∇ 5.4

2X Ø 4.01 ∇ 5.4
for locating pins

107.04

89.35

71.2


Screws and locating pins
must not penetrate
RMR scanner more than 5mm

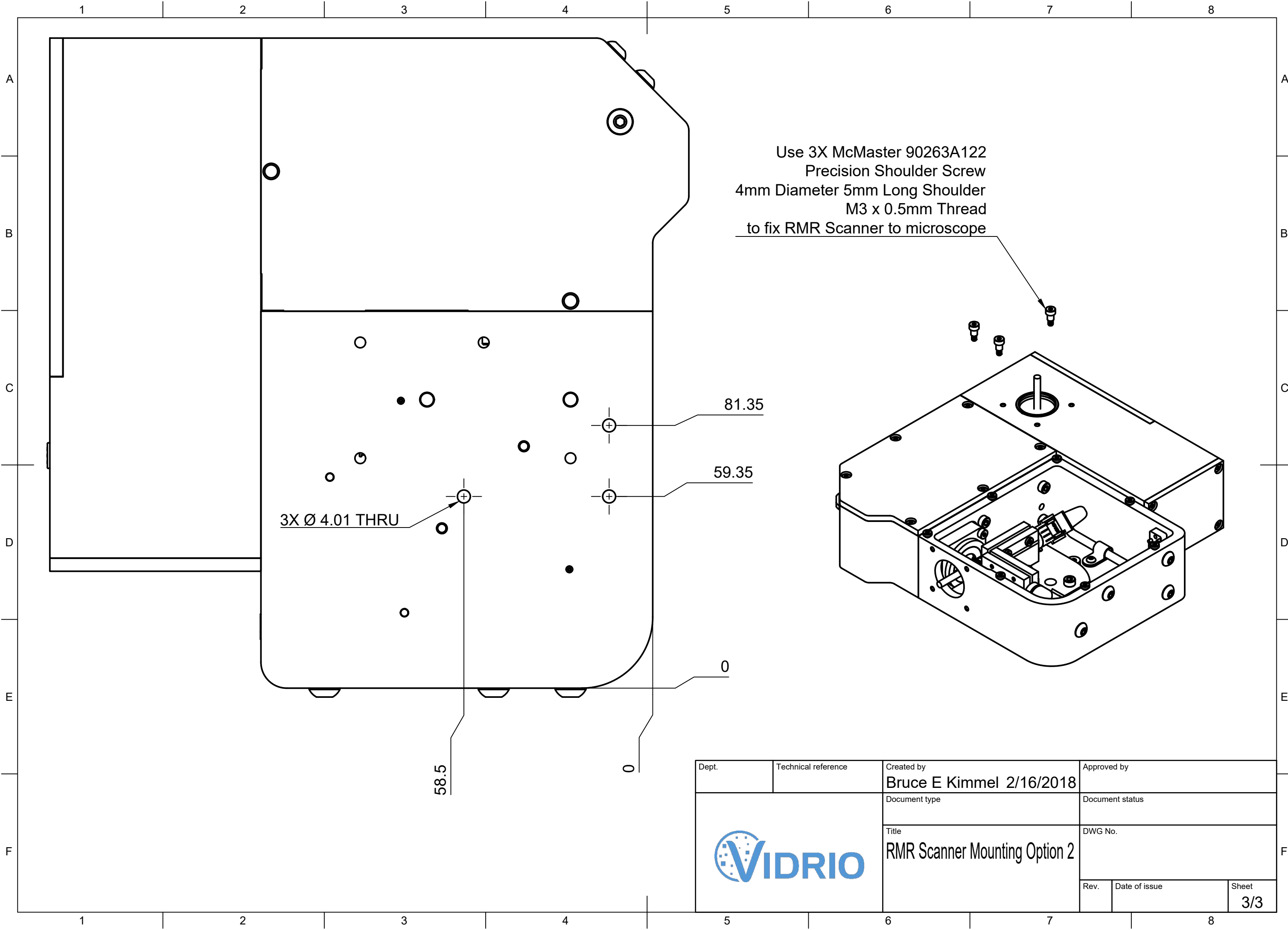
90.6

69.92

25.47

0

Dept.	Technical reference	Created by Georg Jandl 2/16/2018	Approved by
		Document type	Document status
		Title RMR Scanner Mounting Option 1	DWG No.
Rev.	Date of issue	Sheet 2/3	



Use 3X McMaster 90263A122
 Precision Shoulder Screw
 4mm Diameter 5mm Long Shoulder
 M3 x 0.5mm Thread
 to fix RMR Scanner to microscope


3X Ø 4.01 THRU

81.35

59.35

0

58.5

Dept.	Technical reference	Created by Bruce E Kimmel 2/16/2018	Approved by
		Document type	Document status
		Title RMR Scanner Mounting Option 2	DWG No.
Rev.	Date of issue	Sheet 3/3	