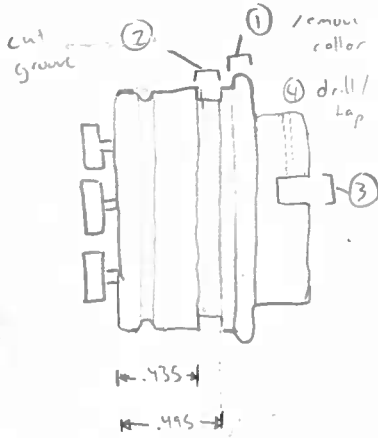


Scale is approximate to size, all measurements in inches

side view



Two lathe operations

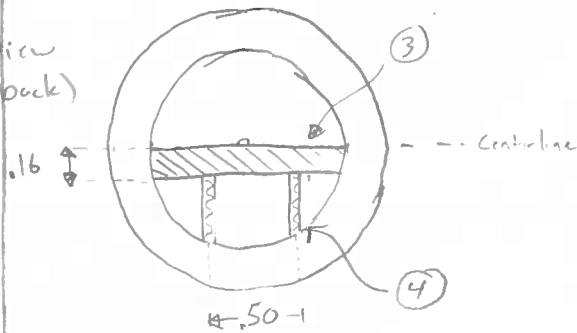
(1) remove existing "collar" (i.e. cut flush with body)

(2) cut groove:

.435 to .495 from back (see picture)
.035 deep

Also:

front view (screws on back)



(3) cut groove

.16 wide, one side aligned along centerline

.16 deep

drill holes .50
apart, .10 from face
2-56 tap

(4) two tapped holes (2-56)

modification of 3 existing parts

a part with operations (3) & (4) already done is included for reference

3 Parts (Supplied)

