

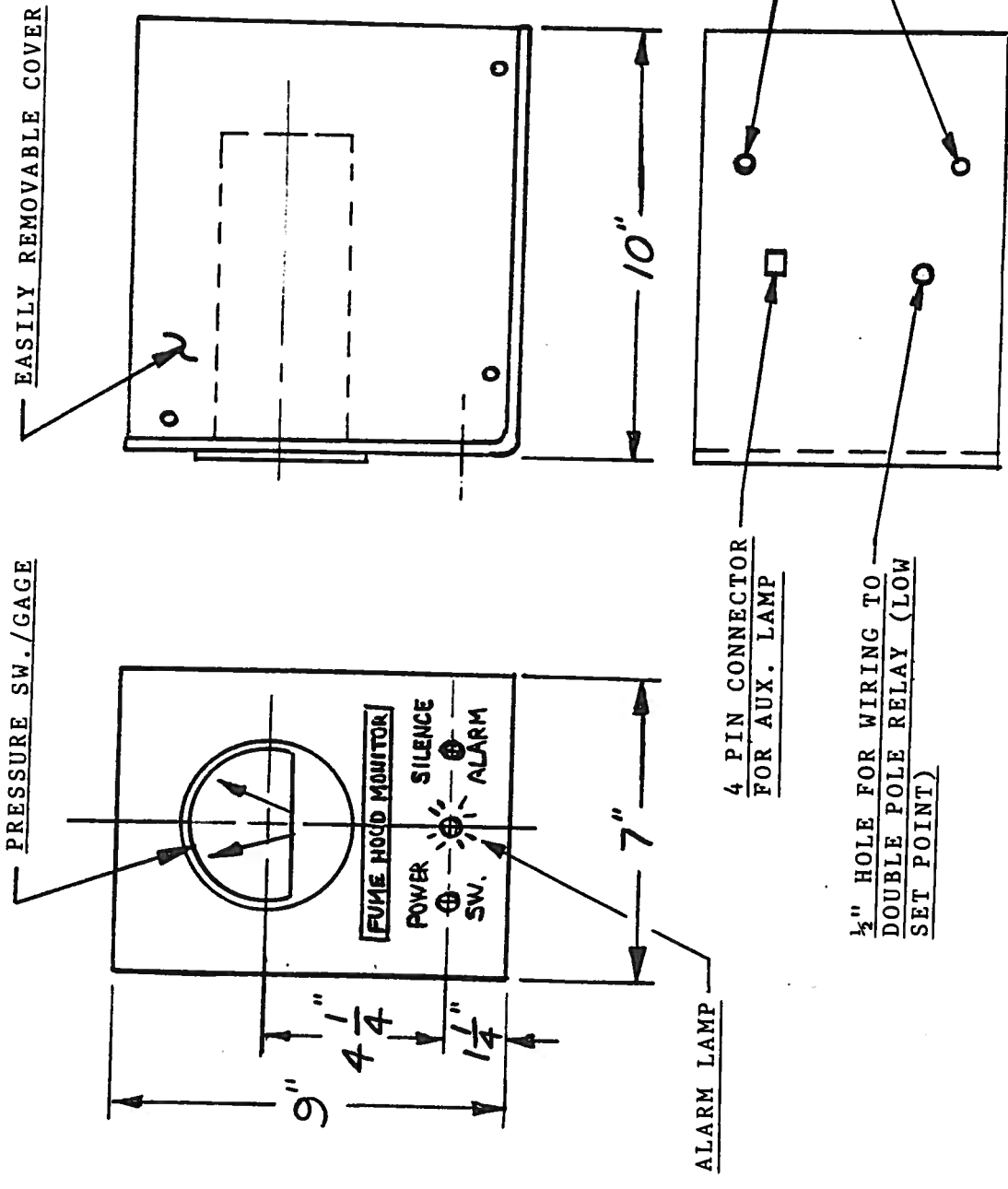
SCHEMATIC

VICTOR ASSOCIATES, INC.

EXHAUST MONITOR

MODEL #82086-1

AV.H. 7-7-87



EASILY REMOVABLE COVER

PRESSURE SW./GAGE

FUME HOOD MONITOR
POWER SW.
SILENCE ALARM

ALARM LAMP

4 PIN CONNECTOR FOR AUX. LAMP

1/2" HOLE FOR WIRING TO DOUBLE POLE RELAY (LOW SET POINT)

8' POWER CORD

STATIC PRESSURE LINE CONNECTION

BOTTOM VIEW

MAT'L: 3/16" THK. WHT. PVC.

FEATURES:

1. ADJUSTABLE HI AND LOW PRESSURE SET POINTS.
2. AUDIBLE & VISUAL ALARM WHEN FACE VELOCITY FALLS BELOW SAFE OPERATING LEVEL.
3. OVERRIDE SW. TO SILENCE THE AUDIBLE ALARM, BUT THE RED WARNING LIGHT REMAINS LIT UNTIL THE FACE VELOCITY INCREASES TO EXCEED THE ALARM TRIGGERING LEVEL.

EXHAUST MONITOR

VICTOR ASSOCIATES, INC.
 HATBORO, PA 19040



TABLE OF CONTENTS

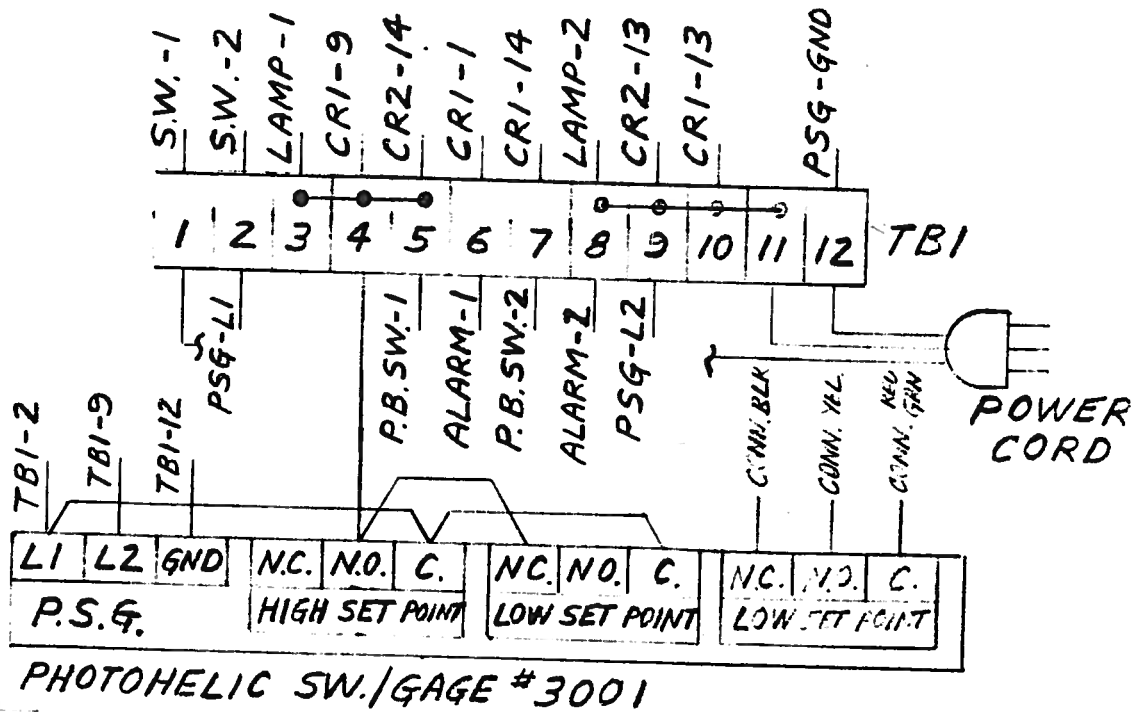
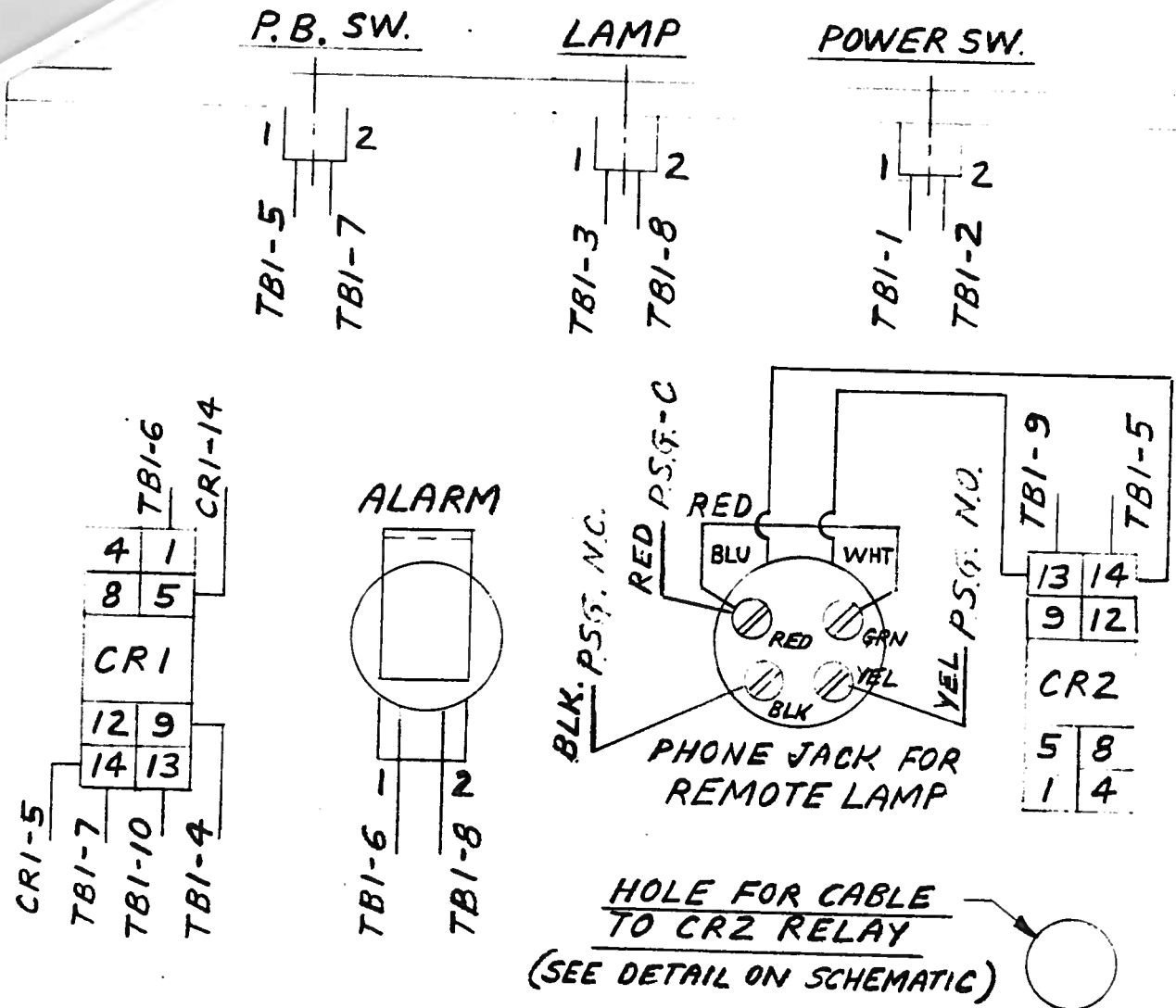
	<u>PAGE</u>
1. EXHAUST MONITOR DRAWING	1
2. ELECTRICAL SCHEMATIC	2
3. WIRING DIAGRAM	3
4. WIRING FOR REMOTE CONNECTOR	4



VICTOR ASSOCIATES, INC.

658 SERRILL DRIVE • HATBORO, PENNSYLVANIA 19040
(215) 672-2011

OPERATING AND SERVICE
MANUAL FOR
EXHAUST MONITOR
MODEL #82086-1



WIRING DIAGRAM

VICTOR ASSOCIATES, INC.

PAGE 3

EXHAUST MONITOR

MODEL # 82086-1

A.V.H. 7-7-87

WIRING FOR REMOTE CONNECTOR

