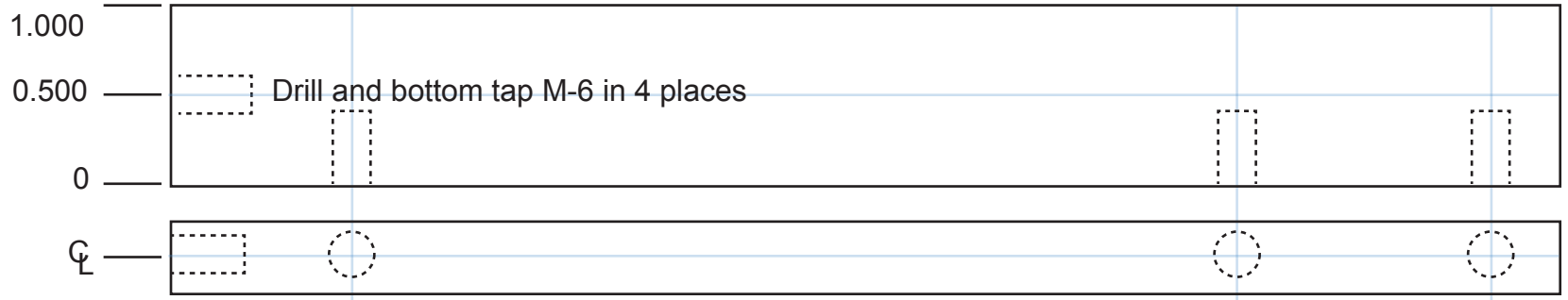
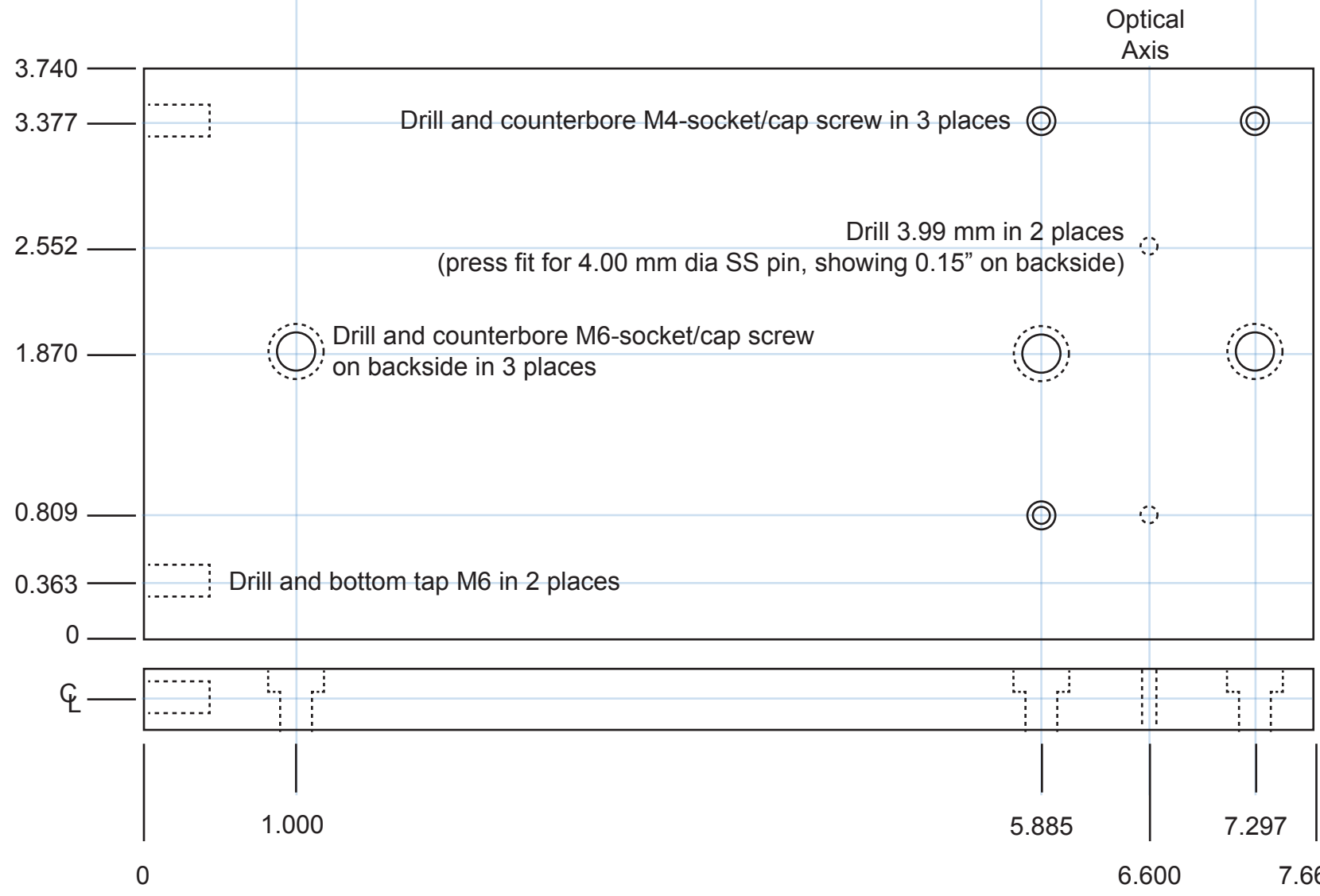


7.660 x 1.000 x 0.400  
T4 or equiv. A -  
Black anodized!

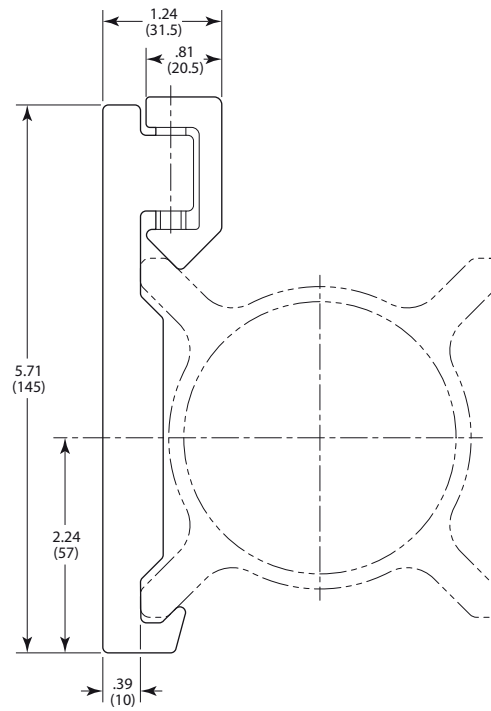
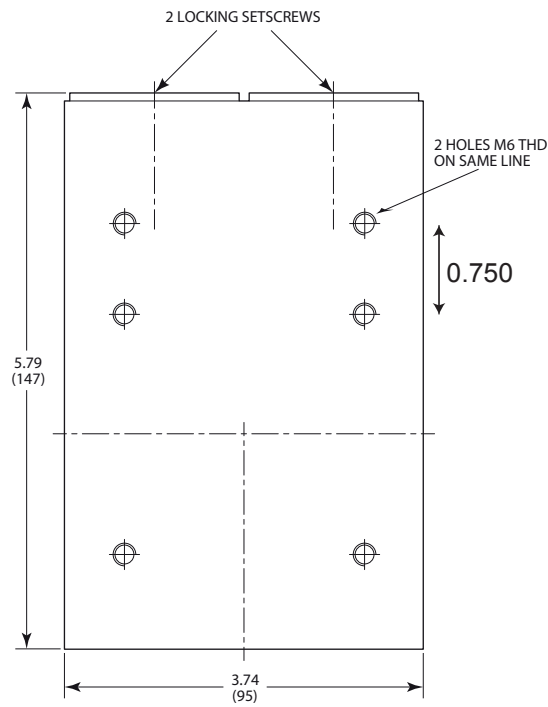


7.660 x 3.740 x 0.400 T4 or equiv. Al - Black anodized



David Kleinfeld FAB 5051 (PHY5364) 858-922-4664

Modification of existing part



MODEL SHOWN: CX95AS  
DIMENSIONS IN INCHES (AND MILLIMETERS)

0 1.0 2.0 IN.  
0 10 20 30 40 50 (MM)

SCALE 1+2

David Kleinfeld FAB 5051 (PHY5364) 858-922-4664

5.790 x 3.740 x 0.400 T4 or equiv. Al - Black anodize

