

AMERICAN
ASSOCIATION FOR THE
ADVANCEMENT OF
SCIENCE

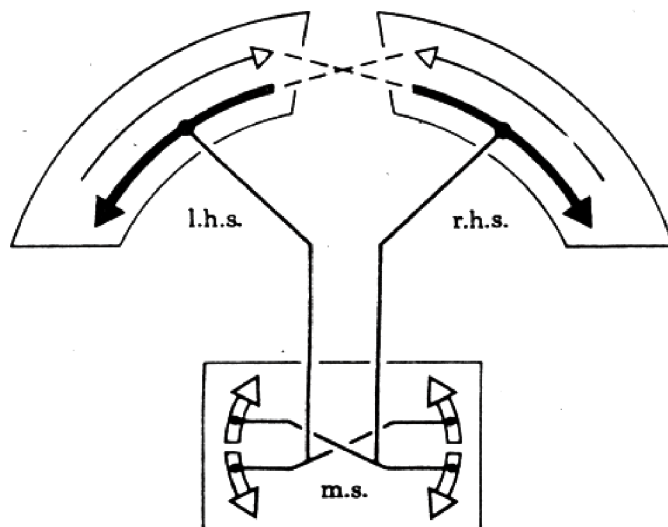
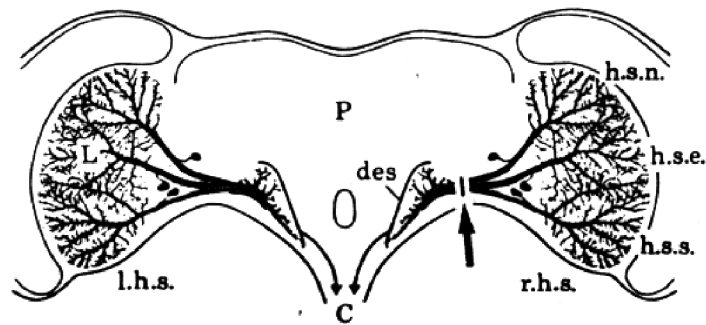
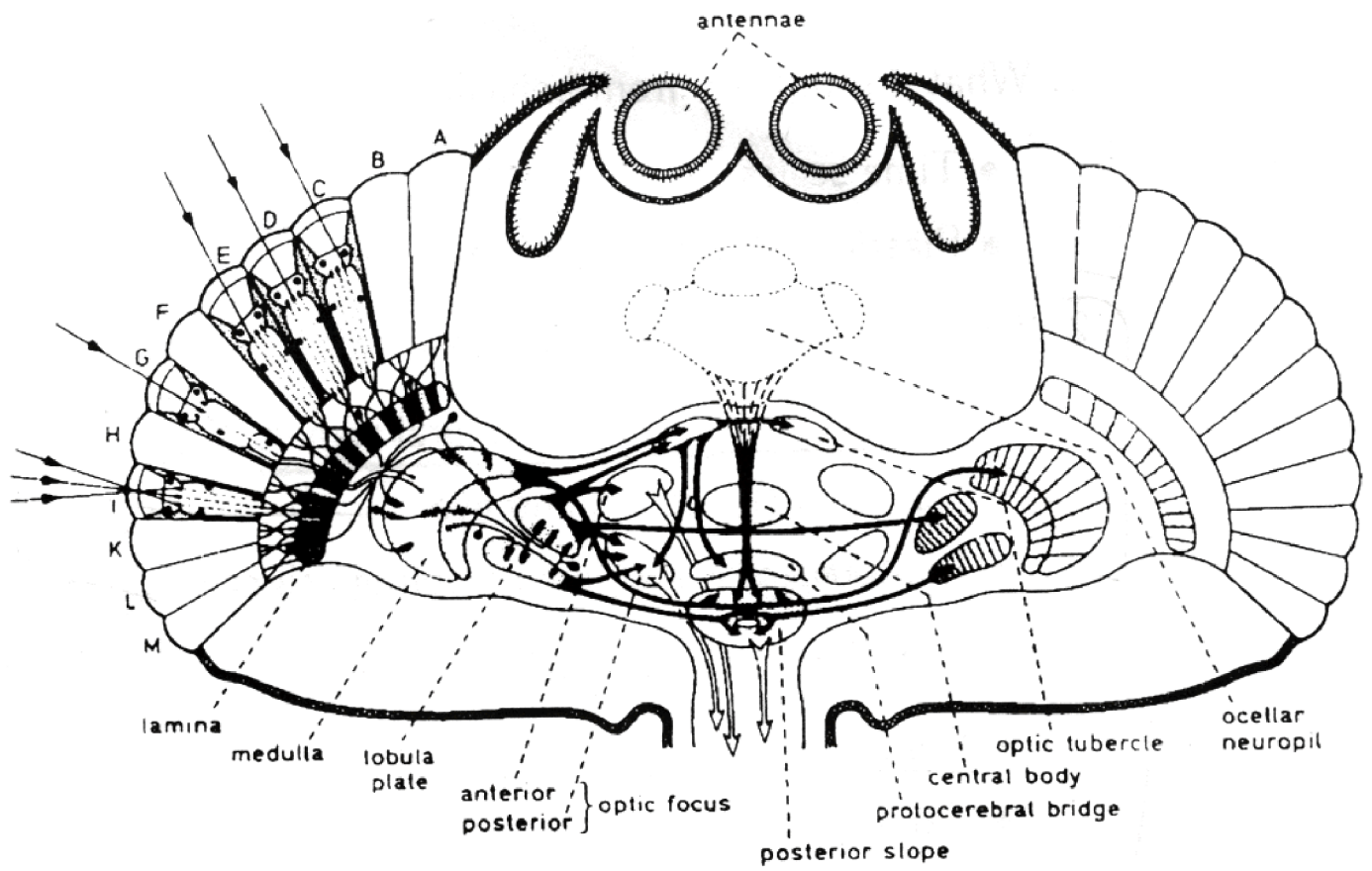
SCIENCE

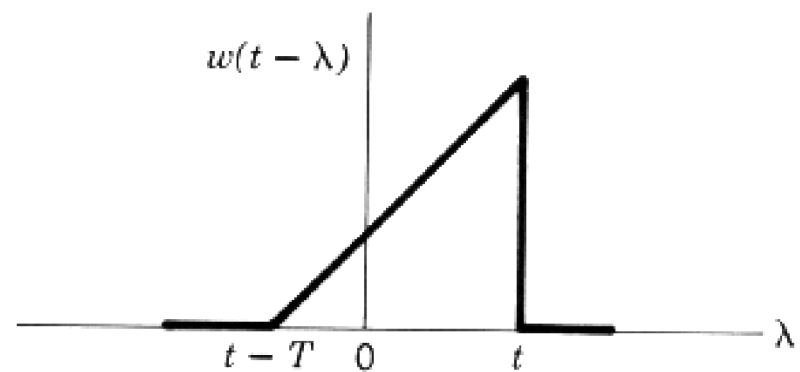
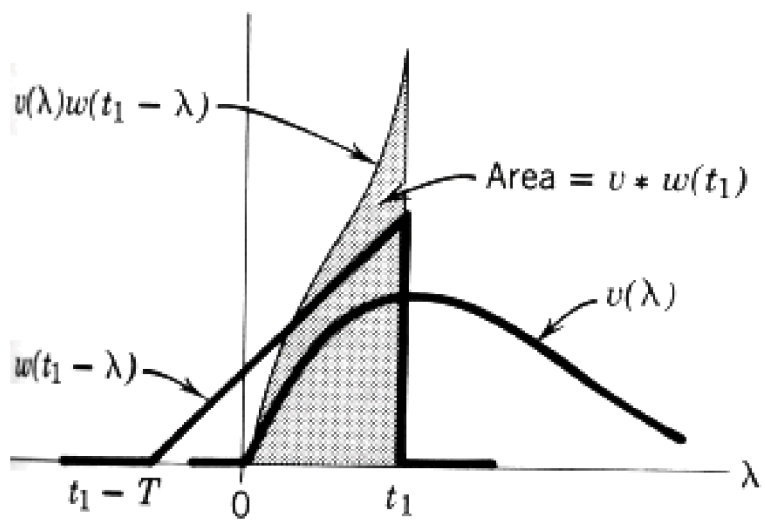
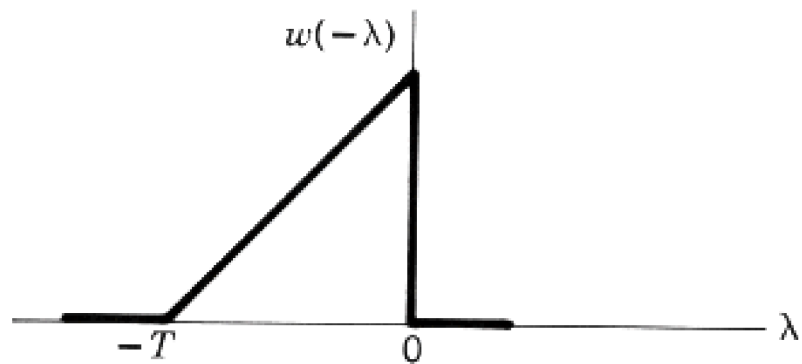
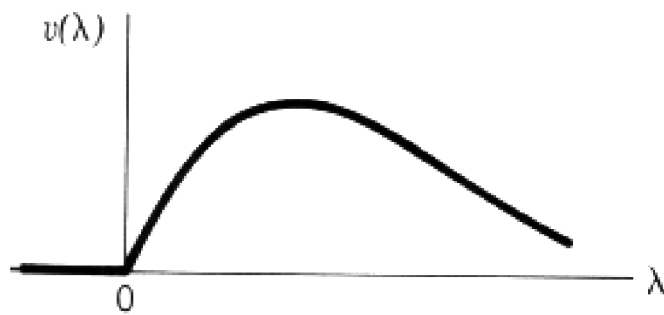
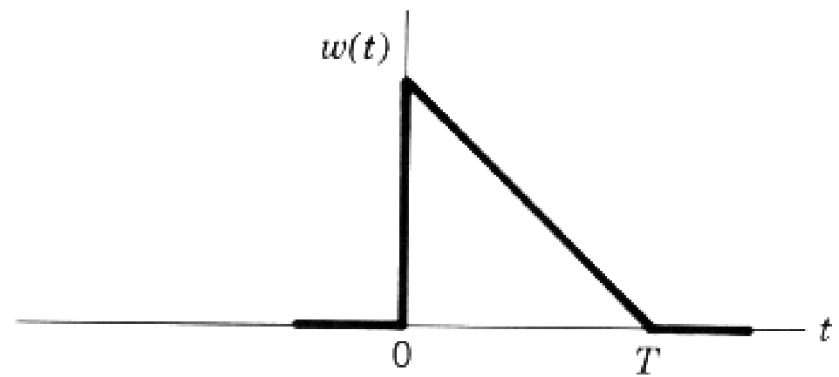
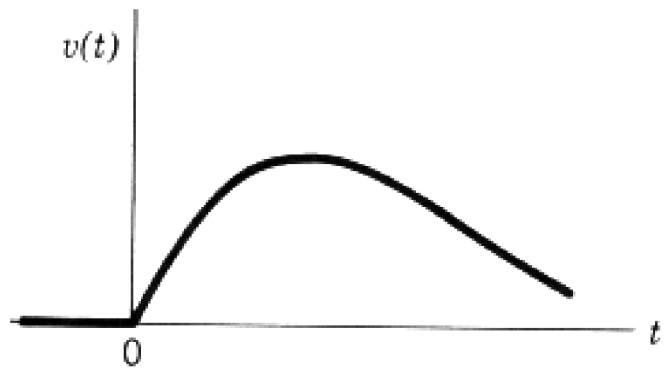
28 JUNE 1991
VOL. 252 ■ PAGES 1757-1886

\$6.00

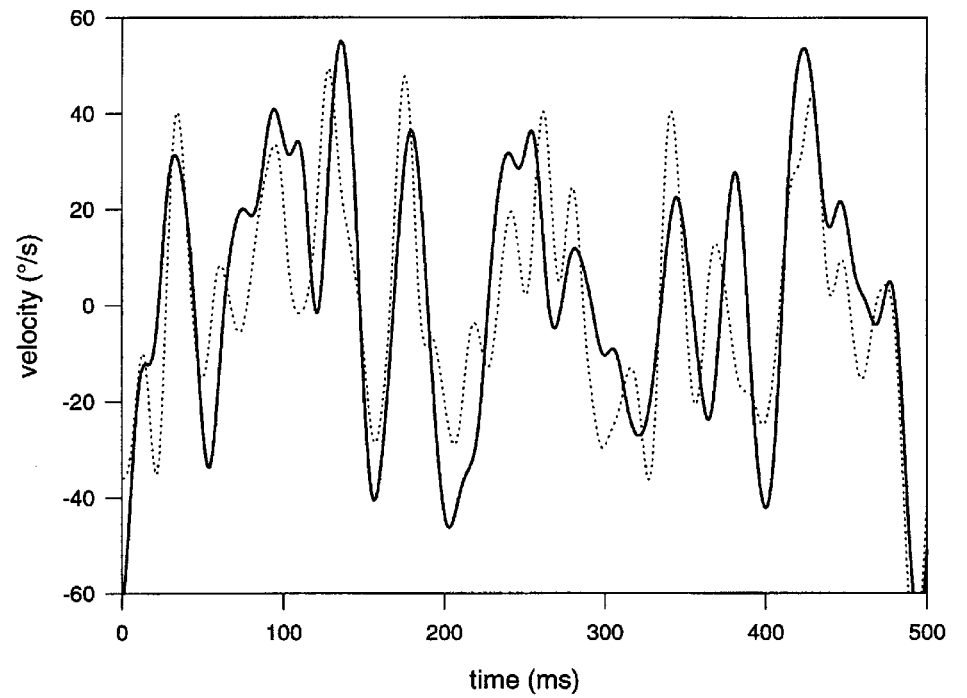
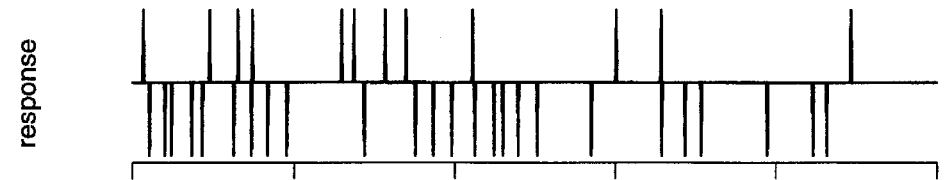
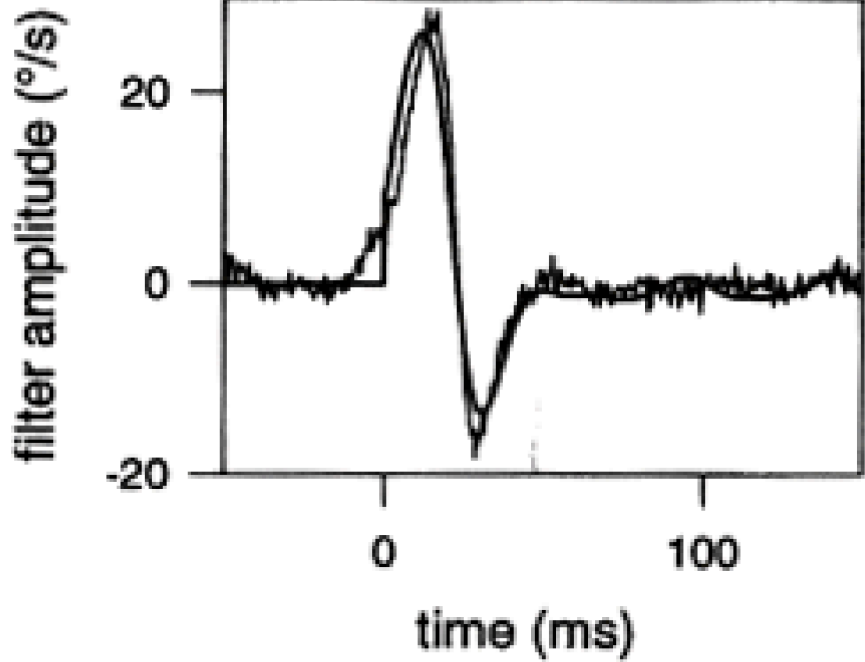
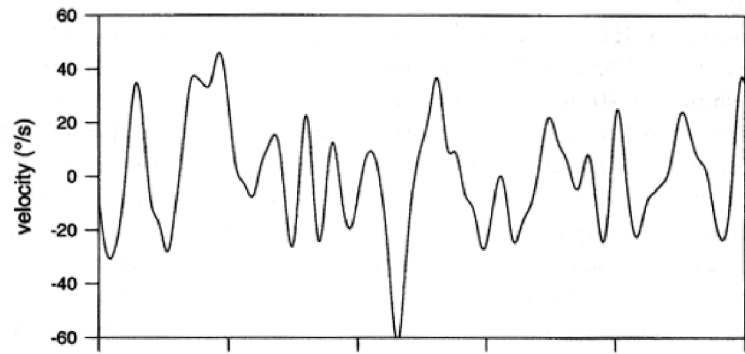


chapt_2fly51eps

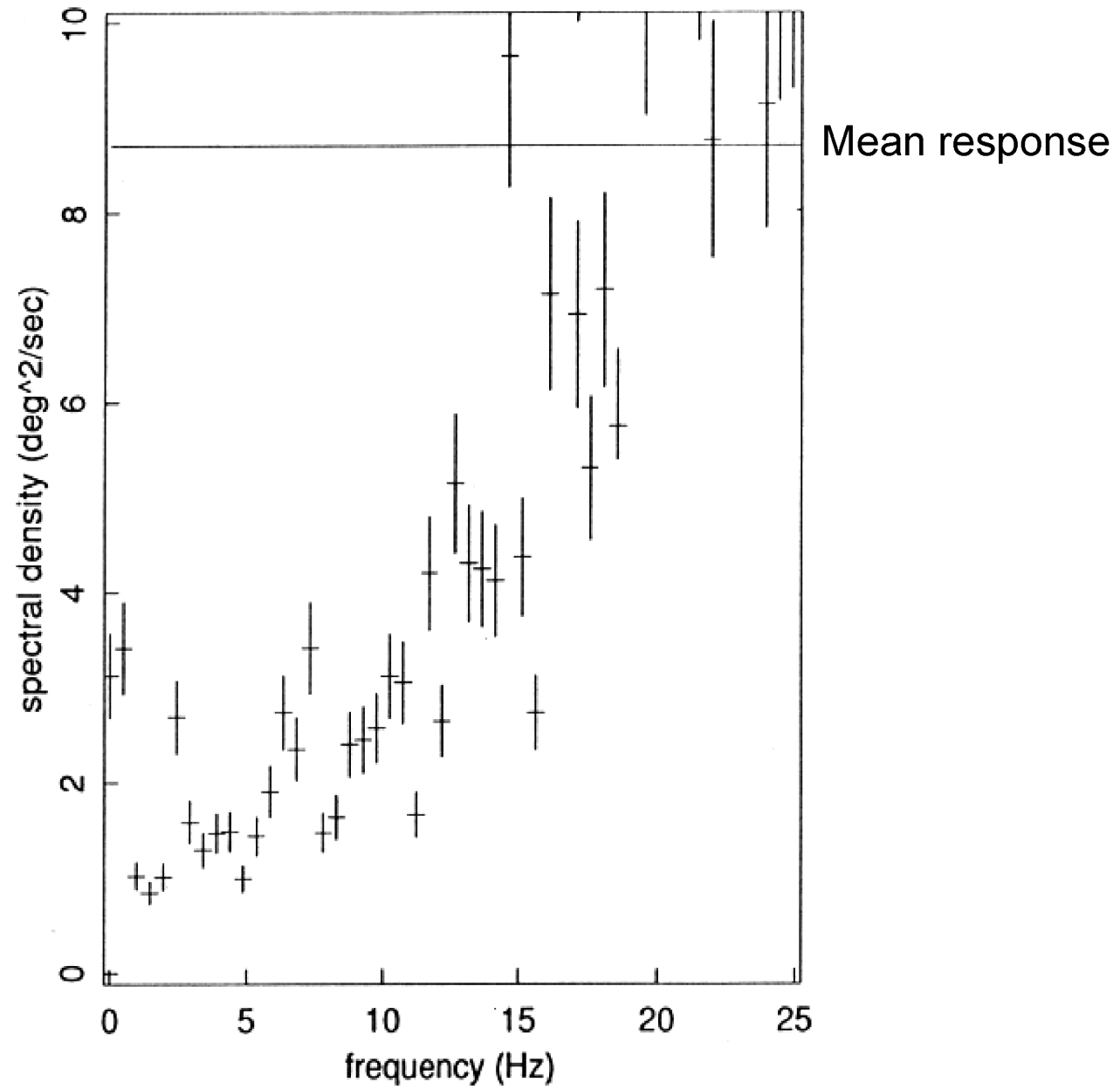


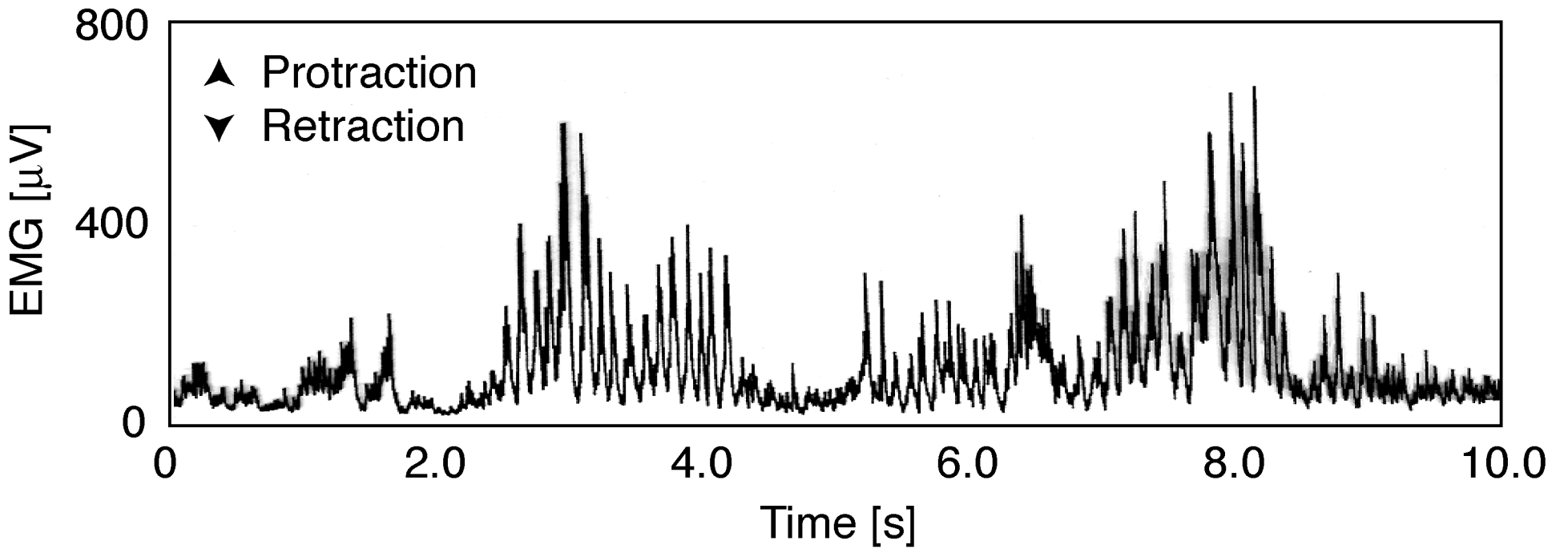
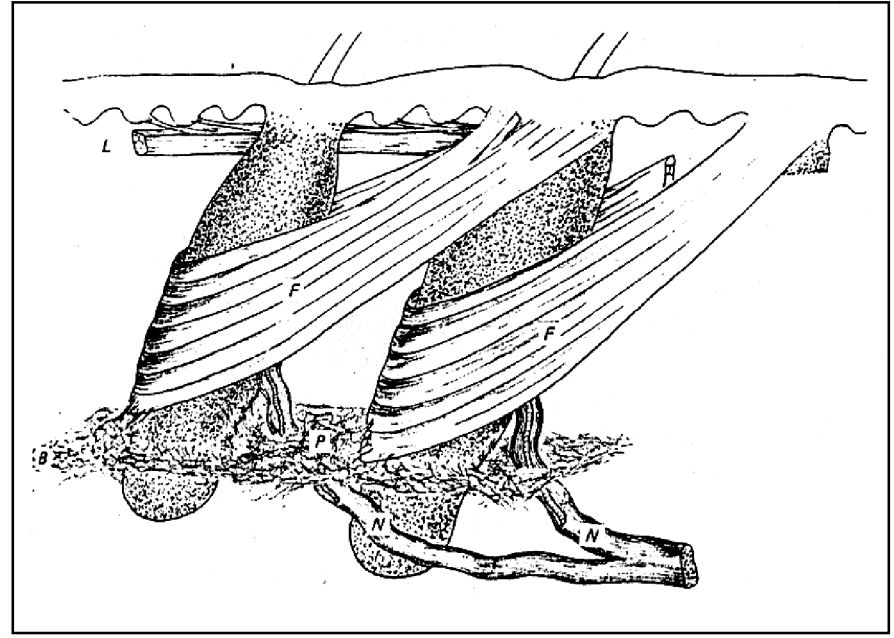
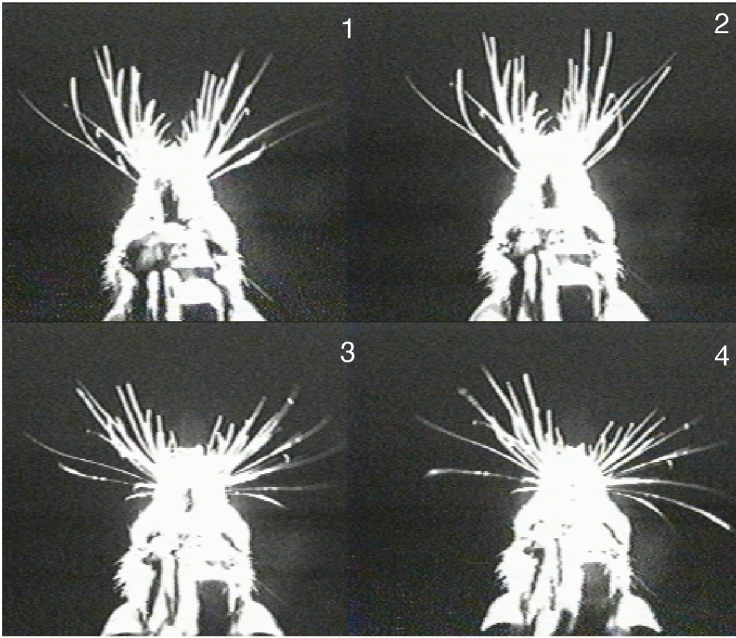


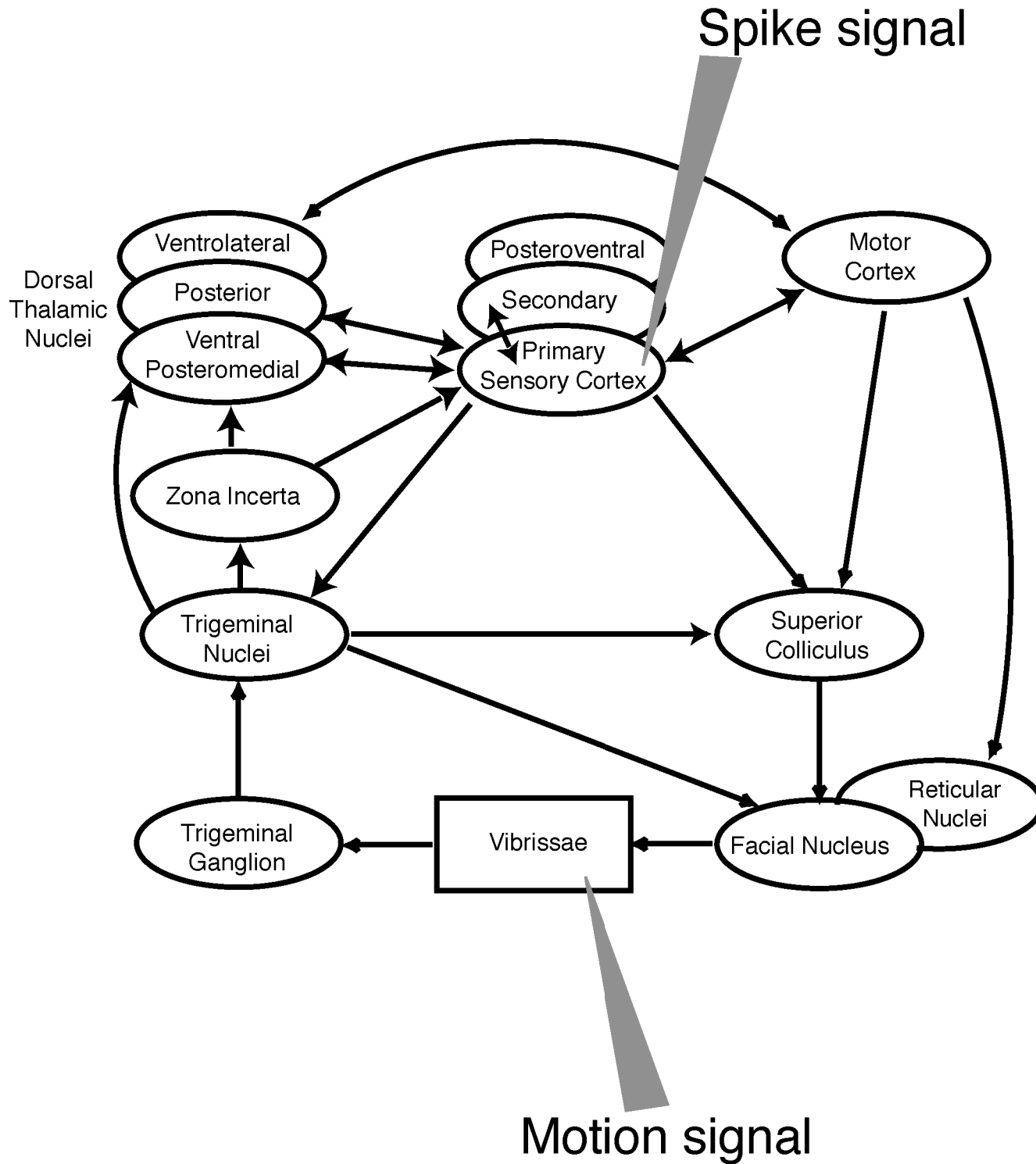
Linear Modeling of the Fly H1 Response



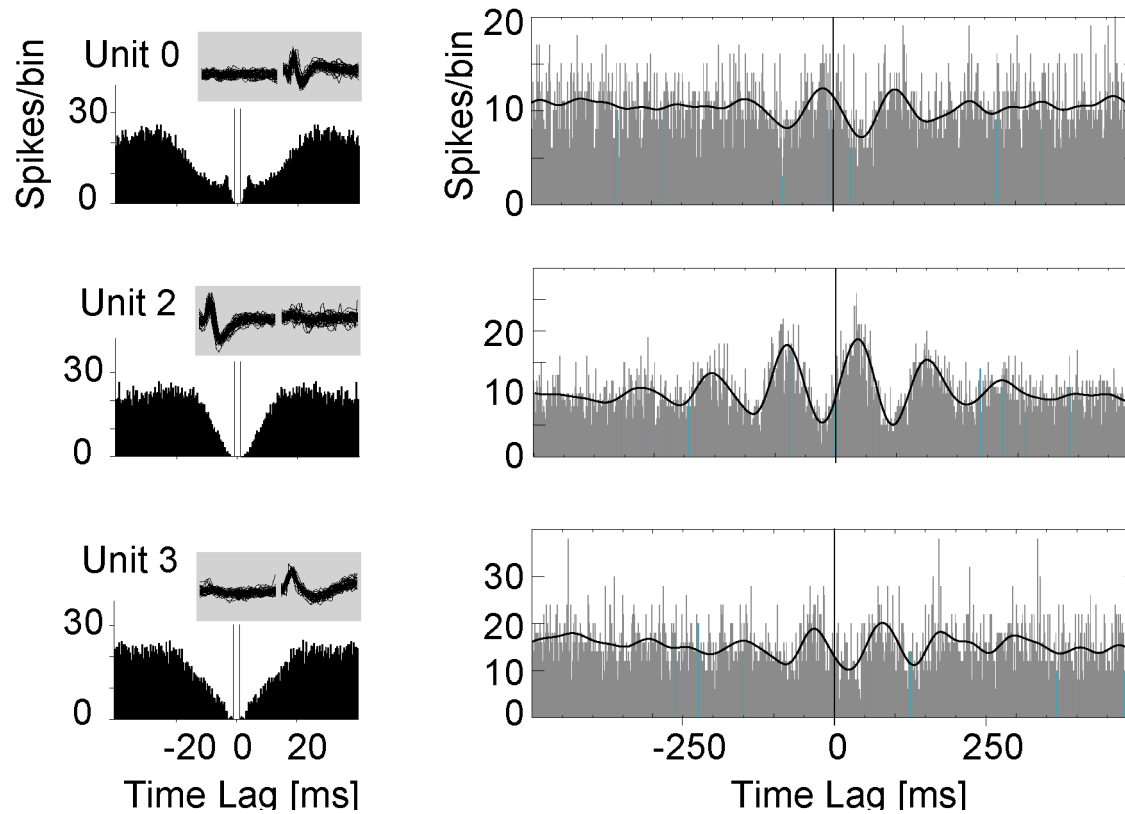
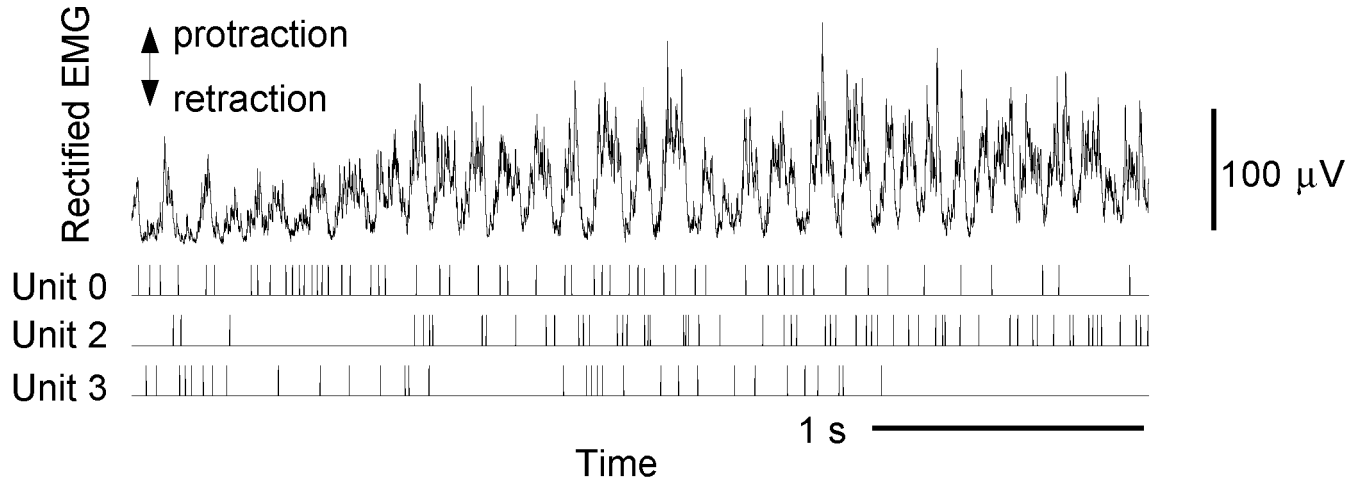
Sensitivity Analysis of the Fly H1 Response







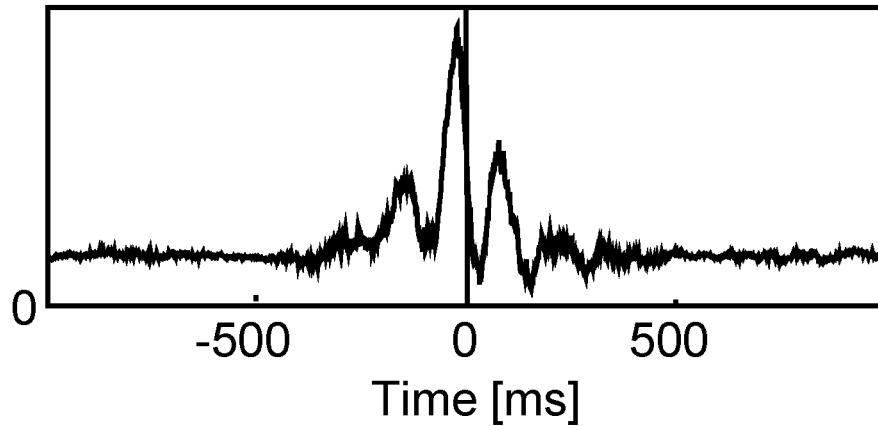
Simultaneous Recording of EMG and Single Units in S1 Cortex



Predicting the Position of the Vibrissae (Mystacial EMG) on a Single-Trial Basis

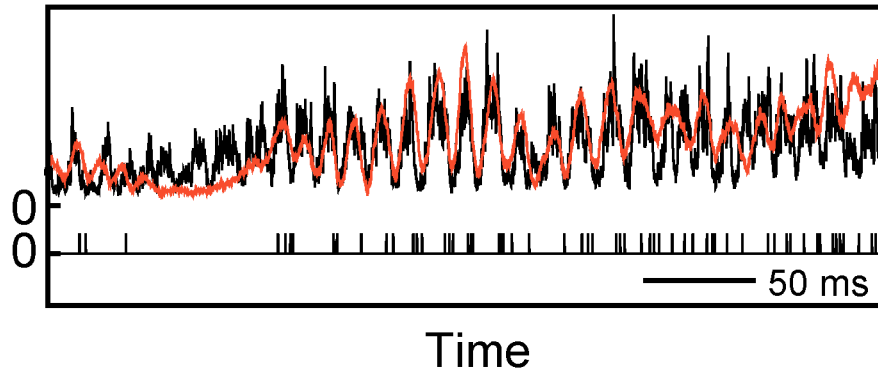


Trial Averaged
Transfer Function, $F(t)$



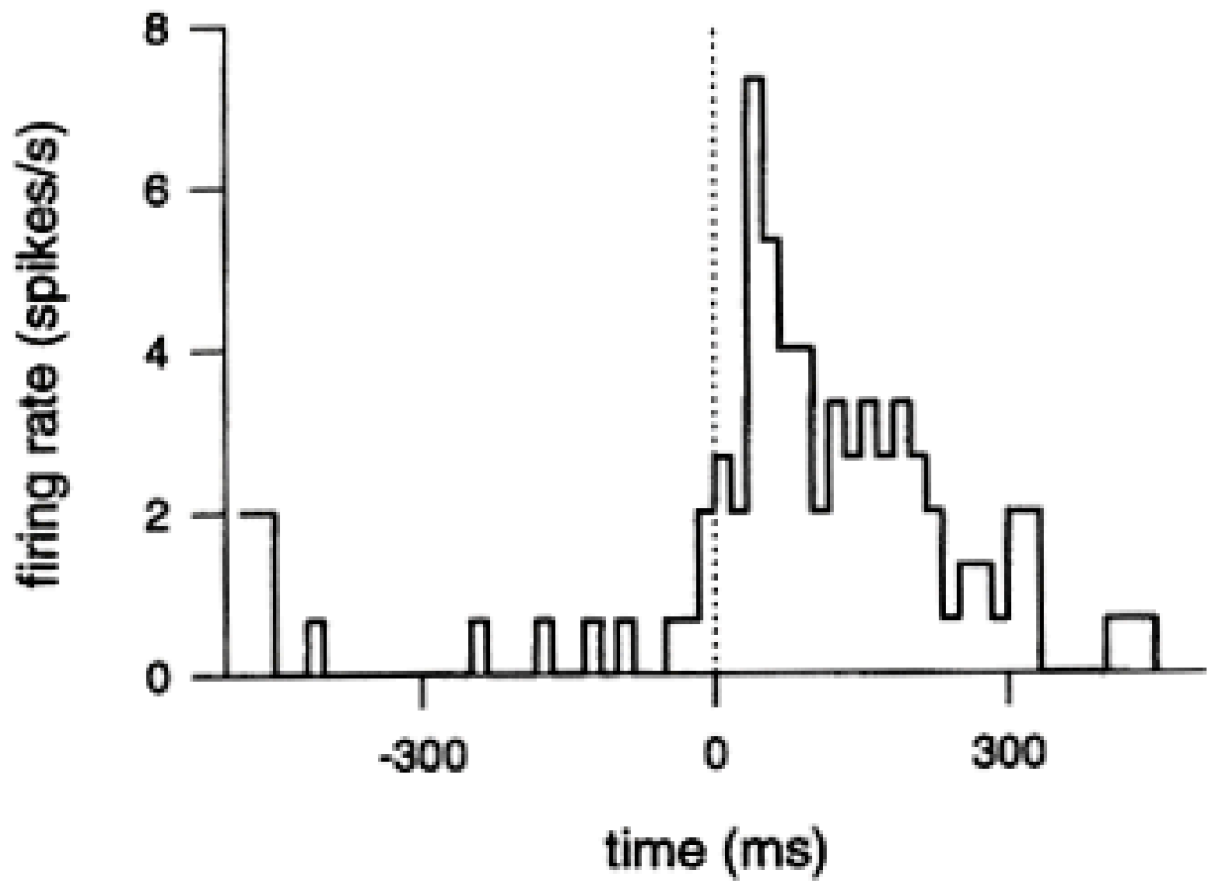
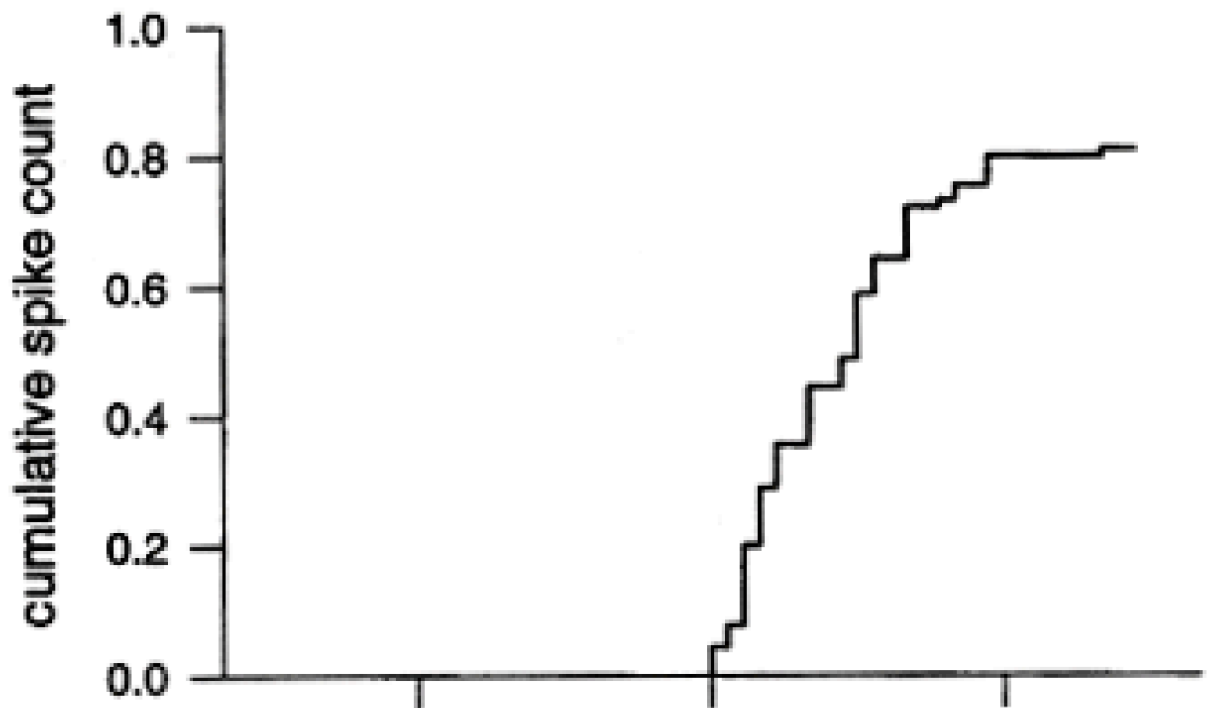
Measured EMG,
 $E_{\text{meas}}(t)$

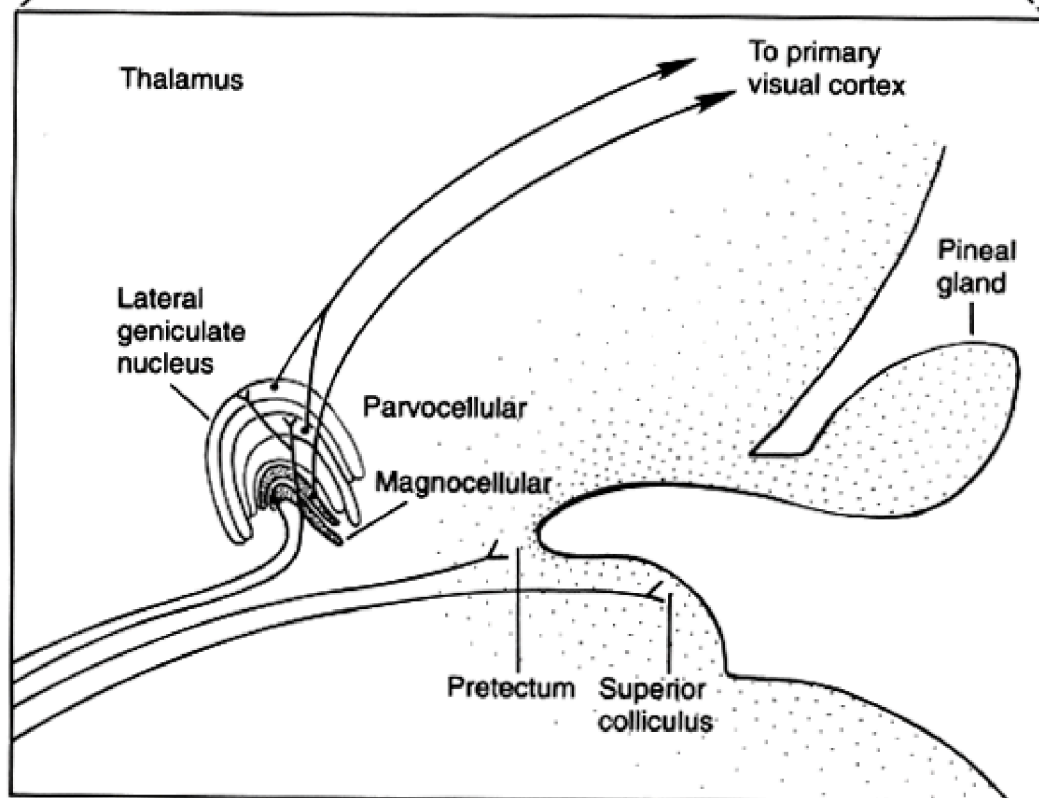
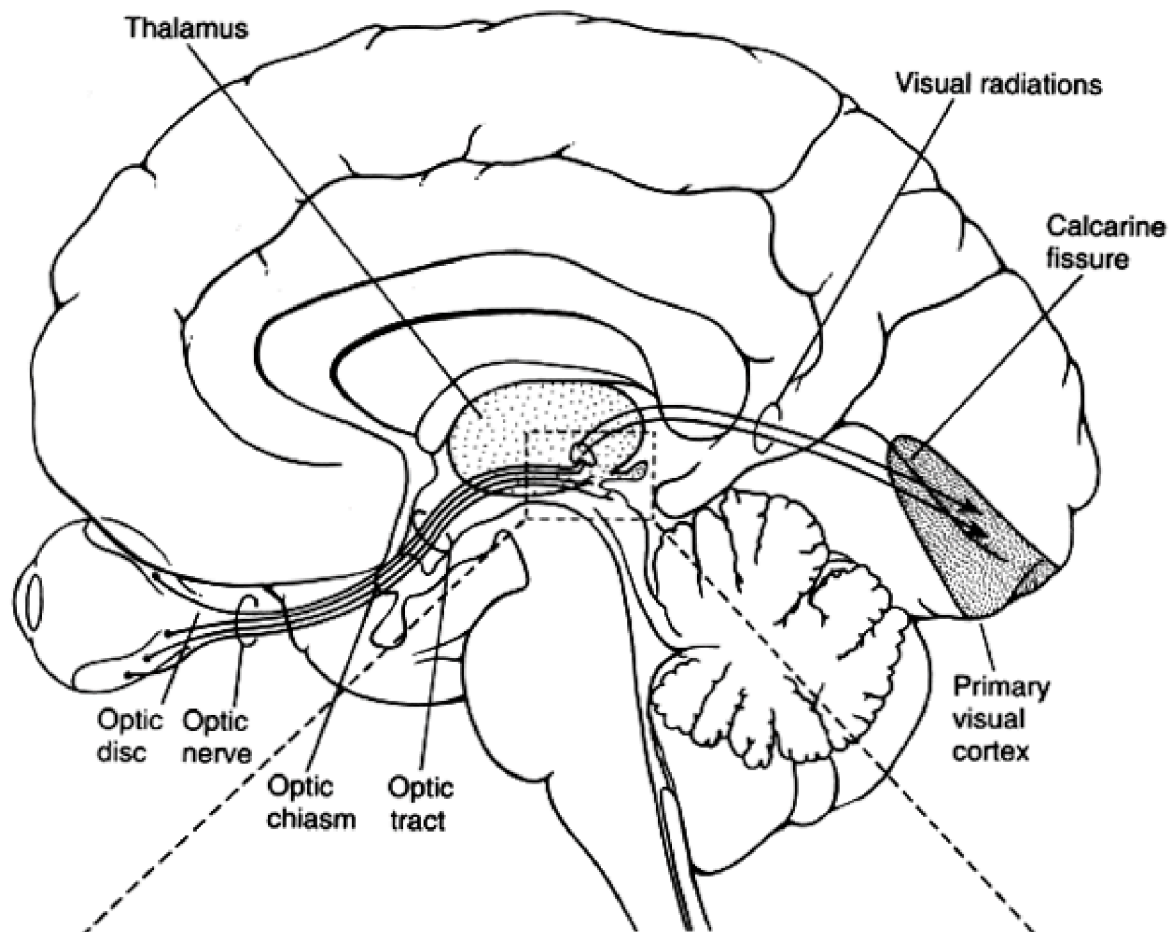
Measured Spike Train,
 $S_{\text{meas}}(t)$

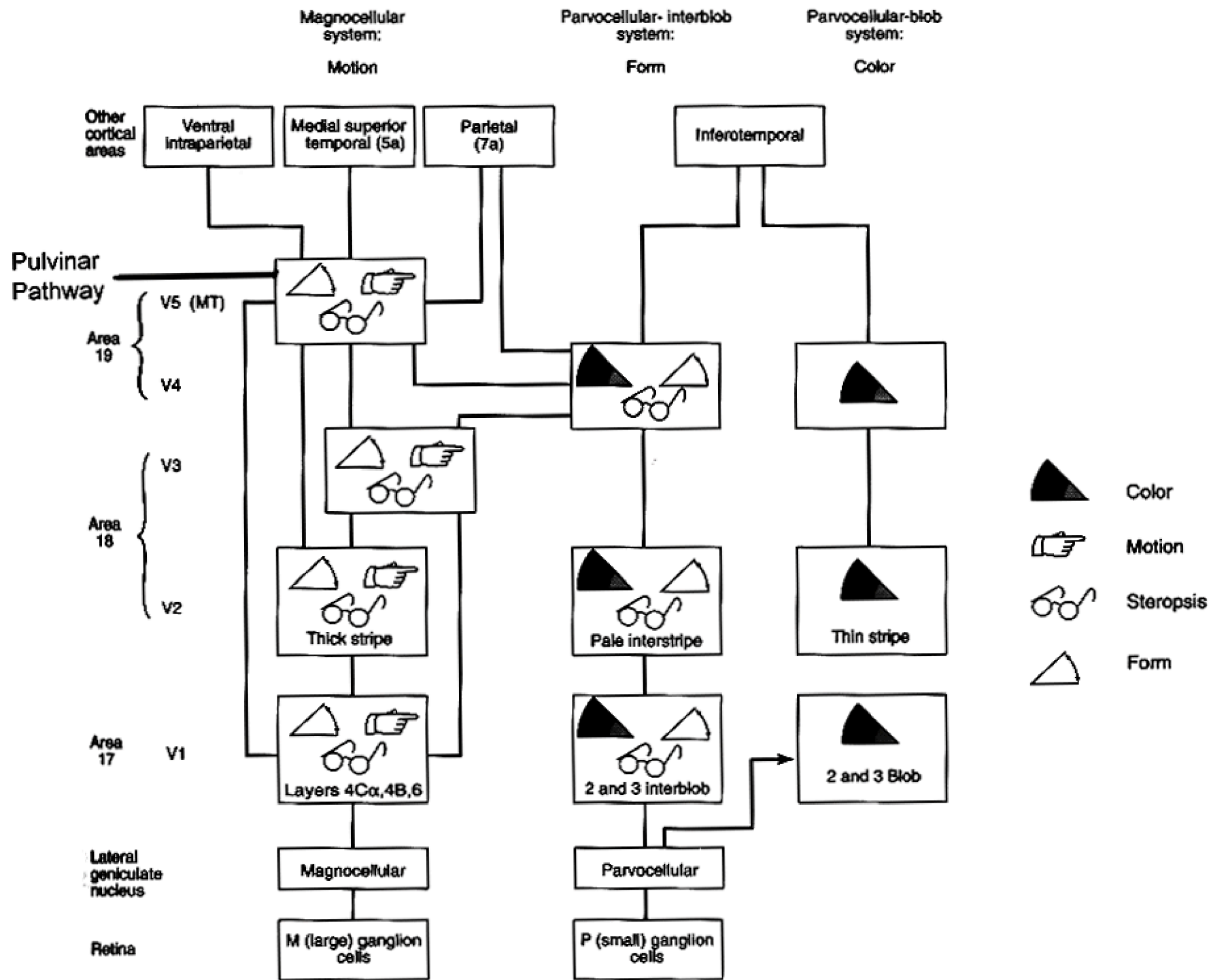


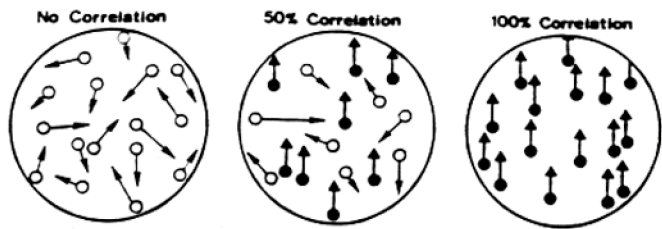
Predicted EMG, $E_{\text{pre}}(t)$

$$= \int_{-\infty}^t dt' F(t-t') S_{\text{meas}}(t')$$

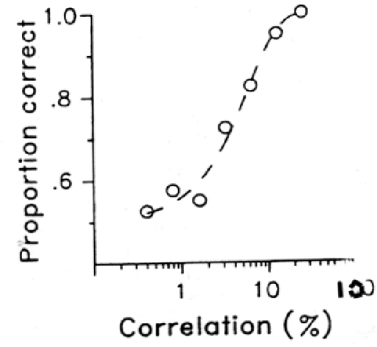








Psychometric



Physiometric

