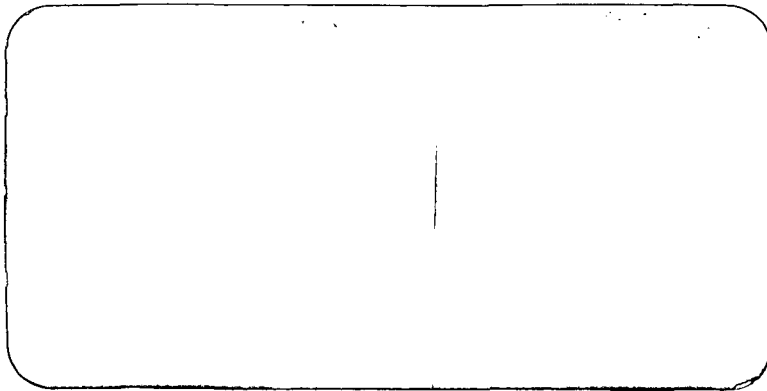


***Your Best Source  
for Vibration Control  
and Optical Tables***



---

**INSTRUCTION MANUAL**

---

**KINETIC SYSTEMS, INC.**

**9100/9200 SERIES VIBRAPLANE  
VIBRATION-FREE WORK STATION**

**The Quality Leader in Vibration Isolation**

**Kinetic Systems, Inc.  
20 Arboretum Road  
P.O. Box 414  
Roslindale, MA 02131  
(617) 522-8700  
FAX (617) 522-6323**

Information contained in this document is subject to change without notice and does not represent a commitment on the part of Kinetic Systems, Inc. Revisions A on September 4, 1998 to this document, or new editions of it, may be issued to incorporate such changes.

## CONTENTS

	Page
<b>Section I</b>	
As You Begin.....	1
<ul style="list-style-type: none"> <li>• Technical Assistance</li> <li>• Damage Due To Shipping</li> </ul>	
<b>Section II</b>	
Set Up Procedure.....	2-4
<ul style="list-style-type: none"> <li>• Isolation Leg Stand</li> </ul>	
<b>Section III</b>	
Operation and Set up procedure for optional items.....	5-15
<ul style="list-style-type: none"> <li>• Guardrail Adjustment</li> <li>• Optional Sliding Shelf</li> <li>• Optional Padded Armrest</li> <li>• Optional Fixed Shelf</li> <li>• Optional Monitor Support</li> <li>• Optional Rear and Side Equipment Shelf Assembly</li> <li>• Optional Casters</li> </ul>	
<b>Section IV</b>	
Trouble Shooting.....	16
<ul style="list-style-type: none"> <li>• Symptom: Tabletop Will Not “Float.”</li> <li>• Symptom: Tabletop “Floats” But Will Not Isolate.</li> <li>• Symptom: Tabletop Over-Reactive.</li> </ul>	
<b>Section V</b>	
Recommended Spare Parts.....	17
<b>Section VI</b>	
Replacement Isolator Installation.....	18&19
<b>Section VII</b>	
Filter Regulator Installation and Operation.....	20
<b>APPENDIX.....</b>	<b>22</b>
<ul style="list-style-type: none"> <li>• 9100/9200 VIBRAPLANE Isolation Table Warranty.</li> </ul>	

## List of Illustrations

Fig. 1 9100/9200 and 9211 Series Vibration Isolation Workstation.....	2
Fig. 2 Mechanical Leveling Foot Height Adjustment.....	3
Fig. 3a 9101/9102 Airline Schematic.....	5
Fig. 3b 9211 Airline Schematic.....	5
Fig. 4 9100/9200 Control panel Illustration.....	6
Fig. 5 The Vibra-Level Valve Adjustment.....	7
Fig. 6 9100/9200 Guardrail Height Adjustment.....	9
Fig. 7 Optional Sliding Shelf Illustration.....	10
Fig. 8 Optional Padded Armrest Illustration.....	10
Fig. 9 Optional Fixed Shelf Assembly.....	11
Fig. 10 Optional Monitor Support Assembly.....	12
Fig. 11 Optional Rear or Side Equipment Shelf Assembly.....	13
Fig. 12 Optional Caster Set Up and Use.....	14
Fig. 13 9101/9102 Replacement Airmount Installation.....	18
Fig. 14 Filter Regulator Installation and Operation.....	20

## Section I

### As You Begin:

Congratulations! The VIBRAPLANE Model 9100/9200 Series Vibration Isolation Table you have purchased has been designed by Kinetic Systems, Inc. for many years of trouble-free user service. It will deliver superior vibration isolation performance for a broad range of research, quality assurance, and production applications.

The VIBRAPLANE Model 9100/9200 Series Vibration-Free workstation is an Active Air Suspension System supported by three or four legs. The maximum gross load capacity for the 9211, 9101 and 9102 are 700 lbs., 800 lbs. and 1,300 lbs. respectively at 80 PSI. If the VIBRAPLANE 9100/9200 Table is to be operated at less than maximum gross load capacity, a proportionately lower pressure air source may be used. For example, a 30 to 50 PSI air source is generally adequate for most small instruments.

In order to get full benefit from your VIBRAPLANE Model 9100/9200 Series Vibration Isolation Table, we suggest you follow the easy, step-by-step instructions in this manual.

### Technical Assistance

Need Technical Assistance? First, refer to the "Troubleshooting" Section of this Manual. If your problem persists, the technical supports staff at Kinetic Systems, Inc. will be glad to answer any questions. Contact us at (617) 522-8700, or FAX (617) 522-6323 or Email [kineticsystems.com](mailto:kineticsystems.com).

### Damage due to shipping

When your VIBRAPLANE 9100/9200 Series Vibration Isolation Table arrives, inspect it carefully for any damage due to shipping. *IF ANY DAMAGE IS DETECTED, NOTIFY THE SHIPPING CARRIER IMMEDIATELY. SAVE ALL PACKING MATERIALS.*

## Section II

### Set Up Procedure:

The following equipment's and tools are recommended to set up your 9100/9200 Series Vibration Isolation System:

- Hydraulic lifting device
- Carpenter's level
- Screwdriver
- Adjustable wrench

Refer to Figure 1 for outline drawings of Labmate I and II Workstation. All 9211 and 9100/9200 Series Vibration Isolation Table is completely assembled and tested at the factory, except for optional items such as Guardrails, Casters, Monitor Supports, Sliding Shelf (9101, and 9102 only), and Fixed Shelf prior to shipment.

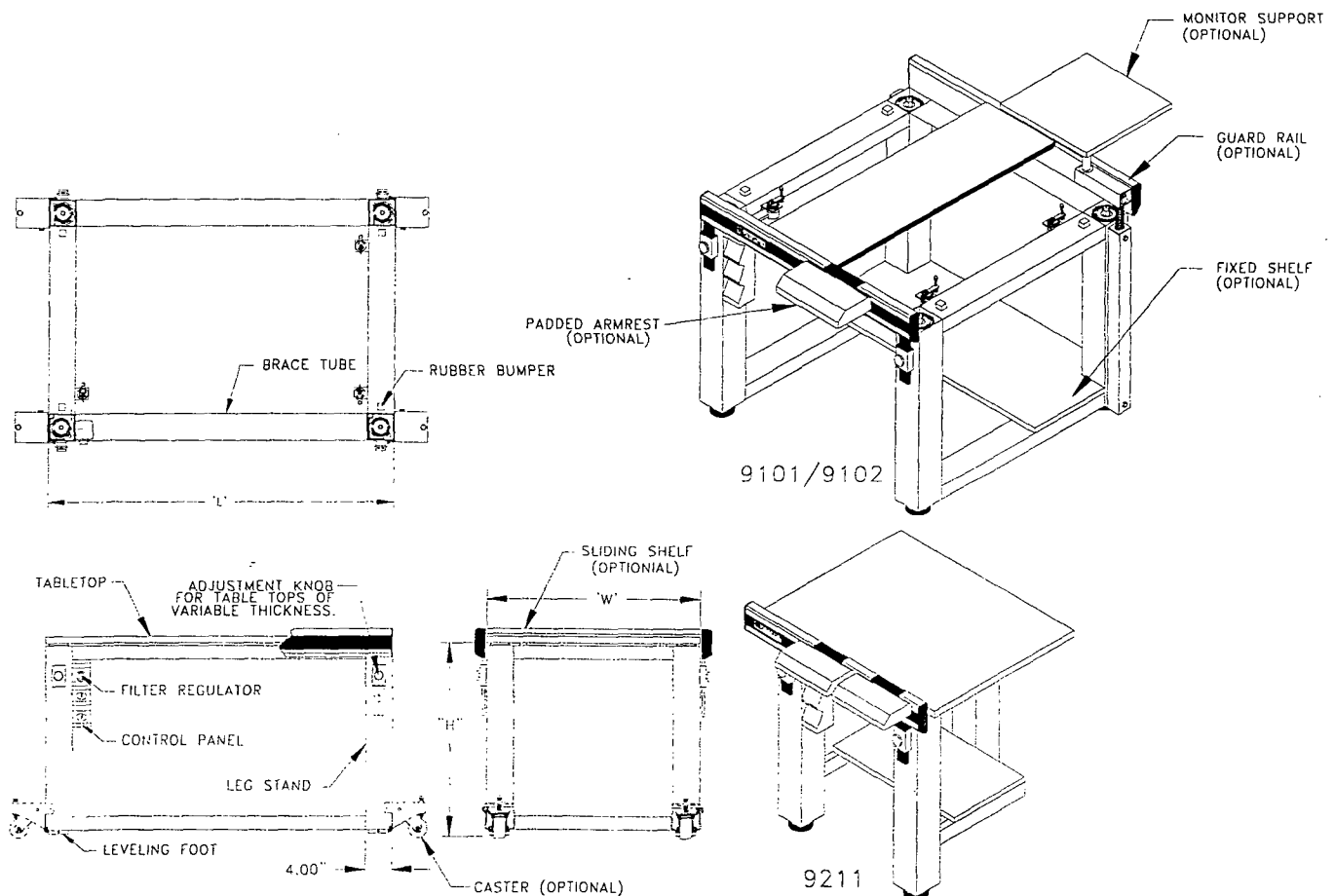
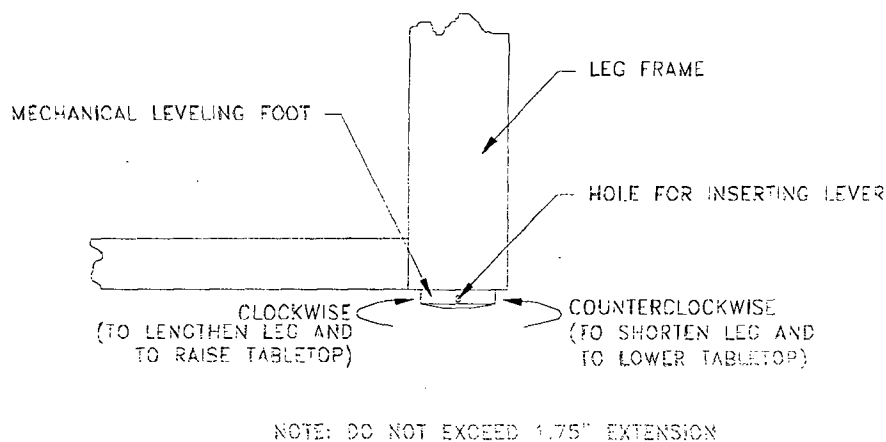


Fig. 1 9101/9102 and 9211 Series Vibration Isolation Workstation

### Isolation Leg Stand:

1. Carefully remove all shipping materials (metal strapping, cardboard, etc.). Additional parts such as optional Guardrails, Casters, Monitor Supports and Sliding Shelf have been packed separately inside the shipping container. Set these parts aside for later installation.
2. Remove the protective wood blocks from the bottom of each leg. The Mechanical Leveling Feet are fully retracted for shipping. Rotate each foot **CLOCKWISE** (see Fig. 2) so that they extend  $3/4$ " below bottom of the leg.
3. Carefully remove the legstand to final location. If the back of the table is to be positioned against the wall, be sure to leave enough access space to permit attachment of the rear optional Guardrail(s).
4. Place Tabletop on top of the legstand on four rubber bumpers (one in each corner).
5. The Tabletop weights several hundred pounds, so use of a hydraulic lifting device is recommended for its installation. Place the Tabletop on four rubber bumpers. Center the Tabletop left-to-right and front-to-back. Proper positioning of the Tabletop is important for even distribution of weight on the legs and to avoid rubbing against the optional Guardrails.



**Fig. 2 Mechanical Leveling Foot Height Adjustment**

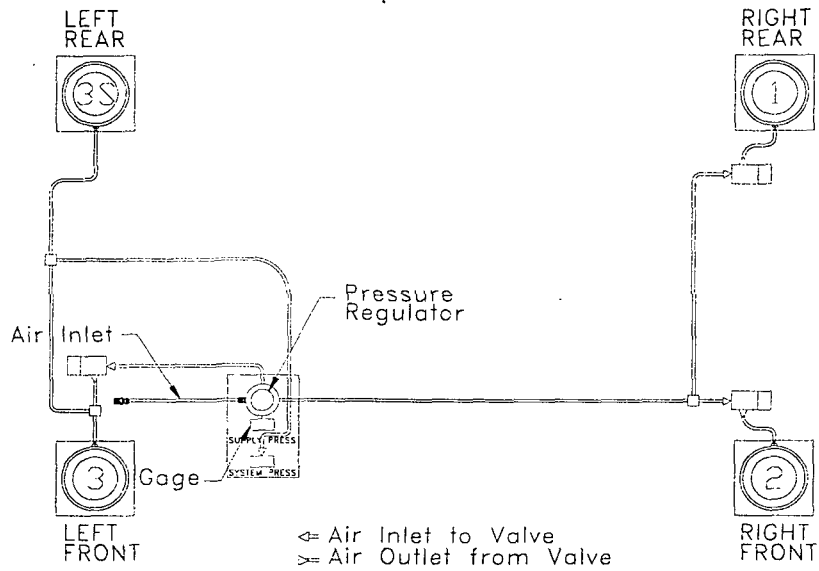
6. Place a carpenter's level diagonally across the Tabletop and check for level condition (both directions) at its final location by raising or lowering the Mechanical Leveling Feet (as shown in Figure 2).



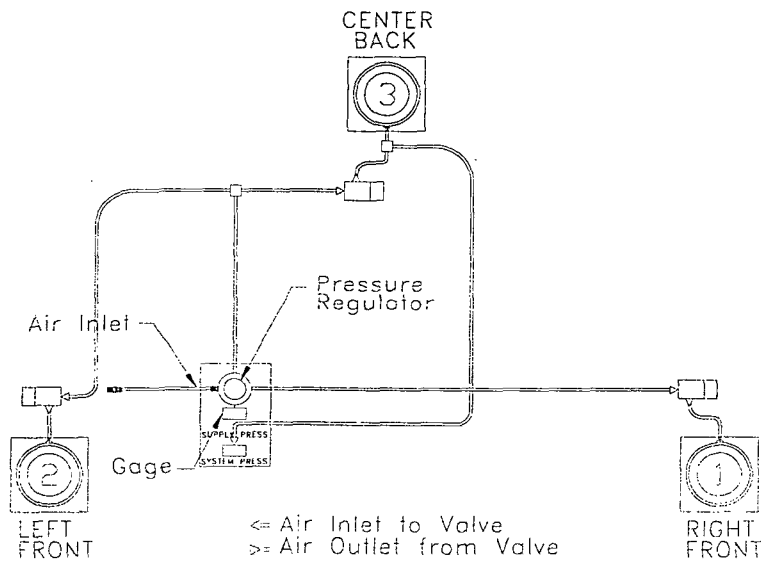
7. If an out-of-level condition is detected, adjust the Leveling Feet by inserting a thin rod or screwdriver (as shown in Fig. 2) into the hole on the side of the Leveling Foot. Rotate COUNTERCLOCKWISE to shorten leg and lower the Tabletop. Rotate CLOCKWISE to lengthen leg and raise Tabletop. After you have leveled the tabletop all four legs should be in contact with the bottom surface of the tabletop, if any gap is observed rotate the leveling foot clockwise to close the gap.
8. Your 9100/9200 Series Vibration Isolation Workstation is now ready for operation.

Section III

**Operation and Set Up Procedure for Optional items:**



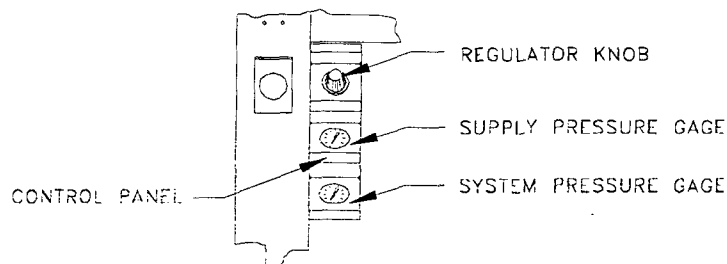
**Fig. 3a 9101/9102 Airline Schematic**



**Fig. 3b 9211 Airline Schematic**

The following instructions explain how to pressurized air supply.

1. Using the Umbilical Assembly (1/8"ODx10 ft. polyurethane tubing and 1/4" NPT fitting), connect the pressurized air supply to the inlet of the Filter Regulator (as shown in Fig. 3a and 3b). The Polyurethane tubing may be shortened by cutting with a razor blade. If additional pipe fittings are required to complete the connection at the pressurized air supply, these must be supplied by the user.
2. The pressurized air supply should be clean dry air or nitrogen from a regulated line or bottle, with pressure not to exceed 100 psi.
3. Position your equipment on the Tabletop, centering it as much as possible.
4. The air inlet Filter Regulator is described in the attached (See page 20).
5. Turn on the air supply and adjust the Filter Regulator on the Control Panel clockwise for approximately 80 psi. It is advised not to exceed 80 psi supply pressure (as shown on Fig. 4).



**Fig. 4 9100/9200 Series Control Panel Illustration**

6. Be sure the Valve Adjustment Screw on each VIBRA-LEVEL Valve Arm is touching the bottom surface of the Tabletop, and that each Valve Arm is slightly below horizontal for in the fill position and 10° above horizontal for neutral position.
7. The Tabletop should begin to "float" within 5 to 10 minutes. If floating does not occur at one or more legs, check the inlet pressure on Filter Regulator and raise if necessary or turn the Valve Adjustment Screw(s) COUNTERCLOCKWISE.

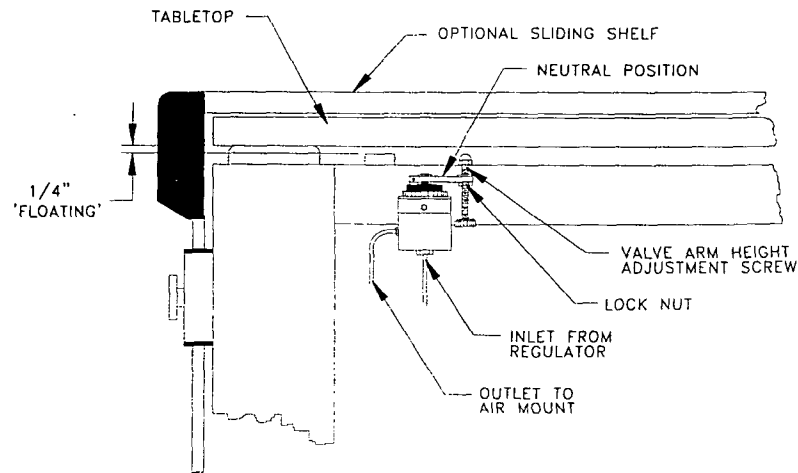


Fig. 5 The VIBRA-LEVEL Valve Adjustment.

8. When the Tabletop is completely "floating," adjust each Valve Adjustment Screw so that the Tabletop is floating approximately 1/4 of an inch (as shown Fig. 5). The Tabletop should be level at this point since leveling was done prior to this by raising and lowering of the Mechanical leveling Feet.
9. Tighten the Lock Nut on each of the Valve Adjustment Screws.
10. After the Tabletop with your equipment is "floating", read the pressure on each Isolator Gage and set the Regulator so that the inlet pressure is approximately 10-15 psi greater than the highest Isolator Gage reading. For example: If the Reference Pressure Gage reads 55 psi, adjust the Filter Regulator Gage to read 65 to 70 psi.
11. If more loads are added to the Tabletop, you may increase the inlet pressure by an amount large enough to maintain the 10-15 psi difference between the inlet pressure and the greatest Isolator Gage reading. It is advised not to exceed 80 psi Filter Regulator Pressure.
12. If one Isolator has a significantly higher pressure than the others due to a non-symmetrical load, the system might exhibit a rocking instability. This can be corrected by either moving the load such that it is more centrally located, or by the addition of a separate Filter Regulator assembly for that Isolator (Contact KSI for more detailed information on this procedure).
13. Once the Tabletop has been leveled this condition will be automatically maintained as long as the supply pressure is sufficient. If the air supply is shut off for a period of time and then turned back on the Tabletop will automatically return to the preset level.

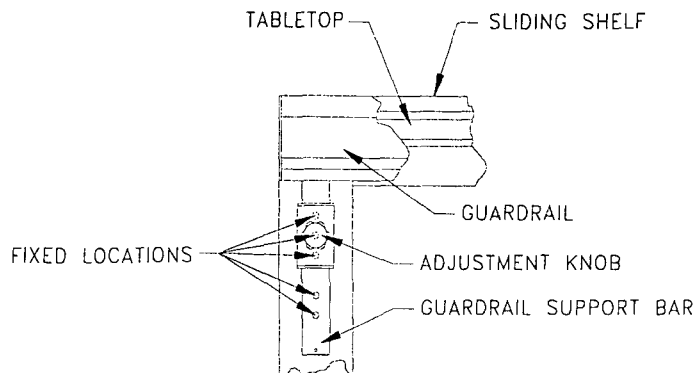
14. If it is desired to lock out the Isolation System for a short period of time, this can be accomplished by lowering the Tabletop onto rubber bumper. The system is lowered by reducing the Filter Regulator pressure to slightly below the lowest Isolator Gage reading, and then bleeding off a small amount of air from each Isolator with the emergency Exhaust Valves on each Isolator. This will maintain most of the compressed air volume in the isolators and thereby reduce the "fill time", when repressurizing.

---

*CAUTION: Never remove heavy loads from the Tabletop suddenly. Two options are recommended for removal of heavy loads: (1) remove heavy loads gradually to permit controlled pressure reduction in the legs by the VIBRA-LEVEL Servo Valves or (2) reduce the pressure in the Filter Regulator gage to below what is required to support the Tabletop.*

---

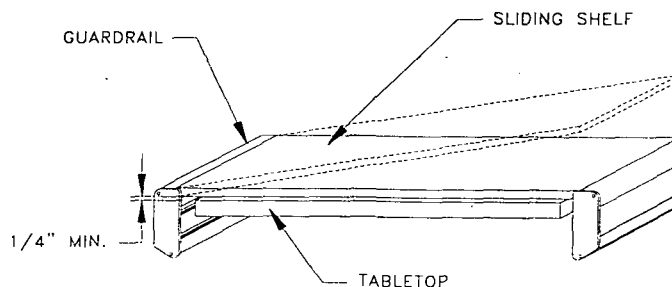
### Guardrail Adjustment:



**Fig. 6 9100/9200 Guardrail Height Adjustment**

1. The Guardrails on the 9100/9200 Series Isolation Table were designed to allow the operator to vary the height to accommodate for different tabletop thickness. Optional Sliding Shelves may be retrofitted. There are four fixed locations on the Guardrail Support Bar that allow the operator to find the right location for him/her.
2. To adjust the Guardrail height loosen the Adjustment locating pin on both sides of the Guardrail and raise or lower the Guardrail evenly (as shown in figure 6). It is not necessary for the front and rear Guardrails to be at the same height, except when used with an optional Sliding Shelf. When used with a Sliding Shelf the Guardrail must be adjust to allow a minimum of 1/4 inch clearance between the bottom surface of the Shelf and the Top surface of the Tabletop (as shown in Figure 7).

### Optional Sliding Shelf (9100 only):

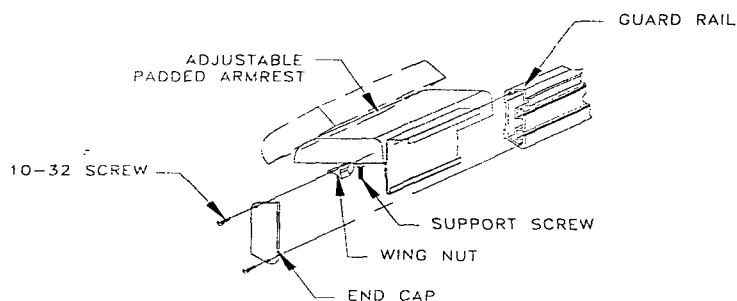


**Fig. 7 Sliding Shelf Illustration**

1. The optional Sliding Shelf can be ordered in different widths to provide the operator with enough surface area needed for equipment not isolated.
2. The Guardrail height must be adjusted as previously discussed to allow for the Shelf or Shelves.
3. The Sliding Shelf or shelves simply drop onto the front and back guardrails (as shown Fig. 7). They can then be slide into any position desired.

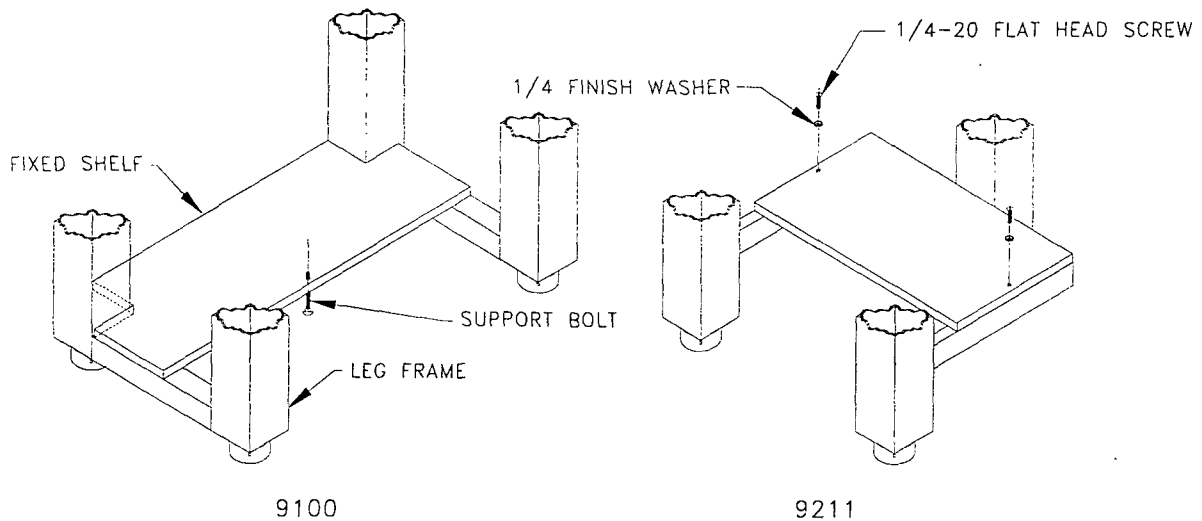
### Optional Padded Armrest:

1. The optional adjustable padded Armrest is ordered in pairs.
2. To install the adjustable padded arm rests you must first remove the endcap and then slide the Padded arm rest bracket over the guardrail and slide them to desired position. Once the padded armrest is in place screw the endcap back onto the guardrail (as shown Fig. 8).



**Fig. 8 Adjustable Padded Arm Rest Illustration**

3. Tightened clamp that secures Padded Armrest to Guardrail.
4. To adjust the angle of the Padded Armrest loosen the Wing nuts on the side of the Armrest and rotate to the desired position then tighten. Use flat head screwdriver to turn support screw out against padded Armrest for position support.

**Optional Fixed Shelf:****Fig. 9 Optional Fixed Shelf Assembly.**

Unpack and place the Fixed Shelf on the bottom Leg Stand brace (Refer to Fig. 9).

For 9100 Only

1. Adjust support bolt by raise or lower to contact with the floor surface.
2. Tight down the nut with support bolt adjustment.

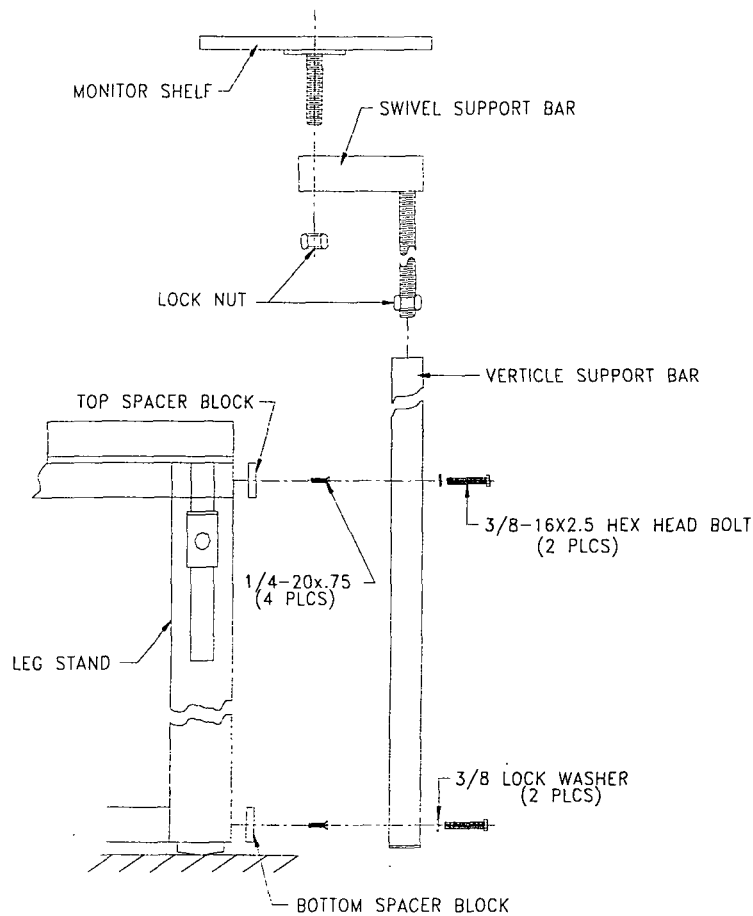
For 9211 Only

1. Position clearance hole on Fixed Shelf over tapped hole in Side Brace of Leg Stand.
2. Bolt Fixed Shelf in place using 1/4-20 flat head screw and Finish Washer provided.



### Optional Monitor Support:

The following instructions explain how to install the optional Monitor Support assembly (Refer to Fig. 10).



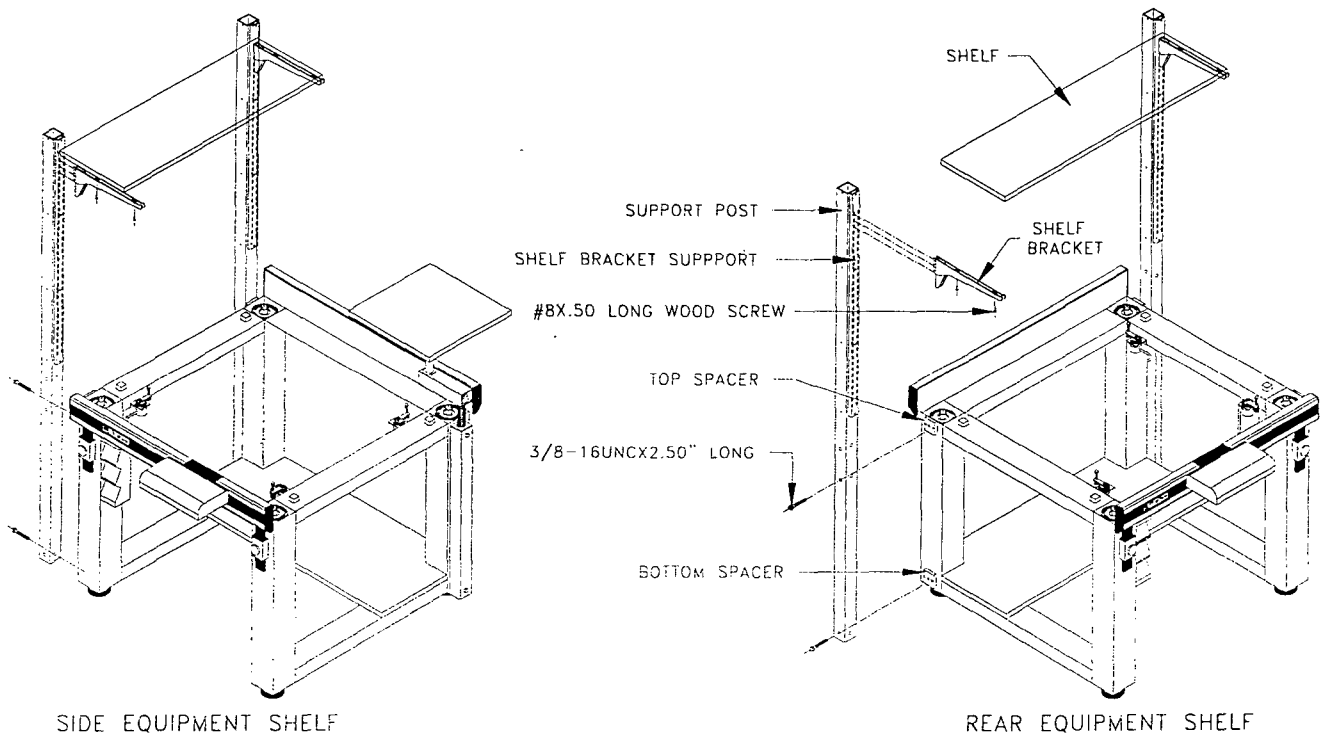
**Fig. 10 Optional Monitor Support**

1. Be sure your VIBRAPLANE Model 9101/9102 Table is SET UP as described in the previous section of this Manual.
2. The Monitor Support is shipped in three sub assemblies: The Monitor Shelf Assembly, the Swivel Support bar Assembly, and the Vertical Support Bar Assembly.
3. Install Top and Bottom Spacer blocks in place by lining up the two holes of the two spacer blocks with the 1/4-20UNC hole on legstand secure into place using two 1/4-20x.75" flat head screws for Top Spacer block and Bottom Spacer block.

4. Hold the Vertical Support Bar firmly in place, lining up the lower hole with the hole in the Top Spacer block. Bolt the Vertical Support Bar into place using the two 3/8 spring lock washers and two 3/8-16x2.50" hex head bolts provided.
5. Position the Swivel Support Bar on top of the Vertical Support Bar, and screw in clockwise until the desired height is reached.
6. Screw the Monitor Shelf Assembly into the threaded portion of the Swivel Support Bar until the desired height is reached.
7. Tighten both lock nuts to prevent unwanted movement.
8. Further adjustments of the Monitor Shelf can be made by rotating the Swivel Support bar Assembly or the Monitor Support Assembly.

#### Optional Rear and Side Equipment Shelf Assembly:

The following instructions explain how to install the Optional Rear and Side Equipment Shelf Assembly (Refer to Fig. 11).



**Fig. 11 Optional Rear and Side Equipment Shelf Assembly.**

1. Be sure your VIBRAPLANE Model 9101/9202 Table is SET UP as described in the previous sections of this Manual.
2. Unpack the Support Posts, Shelf brackets, and the Shelf.
3. Attach the Support Posts to the Top and Bottom Spacers using the 3/8-16UNCx2.5" long hex head bolts. (See Optional Monitor Support on page 12)
4. Position the Shelf Brackets in the slots on the Shelf Bracket Supports to achieve the desired height for the Shelf.
5. Place and center the shelf on the Shelf Brackets.
6. Secure the Shelf into place by screwing the #8x.50" long wood screws into the bottom of the shelf from the underside of the Shelf Bracket.

#### Optional Casters:

1. The Optional Casters supplied with the 9100/9200 Series Isolation Table are retrofittable, Which means that they could be supplies for 9100/9200 Series Isolation Tables already in field.
2. In order to set up the Casters first retract the Casters to their lowest possible positions.
3. Adjust the Mechanical Leveling Feet on the Table so that they extend down from the leg tube by approximately 1 inch.

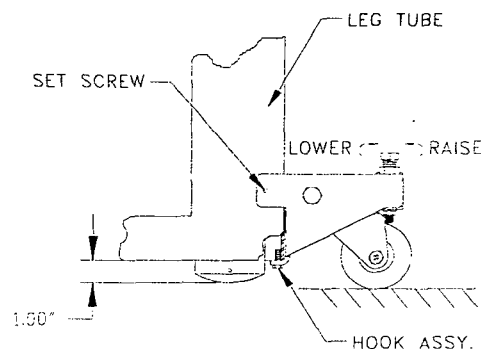


Fig. 12 Optional Caster Set Up and Use

4. You are now ready to attach the Caster to the leg tube. The Caster can be attached to either of 2 sides on the leg tube.

5. Place the caster assembly onto the leg tube on 1 of the 2 sides best suited and slide the Caster assembly up, making sure the hook assemblies on the back of the caster assembly is on the inside of the leg tube.
6. Tighten the 2 nylon tipped Setscrews on each Caster Assembly. These will hold the Caster Assembly in place when they are not in use.
7. To remove the Caster Assembly reverses the previous procedures.
8. Engaging the Caster can be done by turning the bolt on top of the Caster Assembly clockwise until the caster plate is horizontal or parallel with the floor. The leveling foot on that leg should rise, if more clearance is needed this can be done by raising the Leveling Foot into the leg tube.
9. Lower all four Casters and the System is ready to be moved. It is recommended to have at least 1/4 inch clearance between the Leveling Foot and the floor.
10. Once the System is in its desired location raise the Casters by reversing the previous steps and relevel the System. It is not recommended to float the System while the Casters supporting the System.

## SECTION IV

### Trouble Shooting:

The purpose of this section is to aid the user in the diagnosis and repair of any minor problems that may occur. If your difficulty persists, call Kinetic Systems, Inc.'s technical support staff for assistance.

<b>Symptom: Tabletop Will Not "Float"</b>	
<b>Possible Causes</b>	<b>Probable Solutions</b>
Valve Arms set incorrectly	Adjust Valve Arm
Supported load too heavy	Reduce load to system capacity
Supported load uneven	Redistribute load evenly
Gross air leak	Locate leak and repair
Air restriction in fitting or tubing	Find restricted fitting or Tube and replace

<b>Symptom: Tabletop "Float" But Will Not Isolate</b>	
<b>Possible Causes</b>	<b>Probable Solutions</b>
Rubbing between Tabletop and system structure	Reposition Tabletop
Foreign object between Tabletop and system structure	Remove foreign object
Wires or tubing too stiff.	Use more flexible wire or large service loop
One piston too high.	Lower the piston by turning the Valve Arm Adjustment Screw <b>CLOCKWISE</b> .
One piston too low.	Raise the piston by turning the Valve Arm Adjustment Screw <b>COUNTERCLOCKWISE</b>

<b>Symptom: Tabletop Over Reactive</b>	
<b>Possible Causes</b>	<b>Probable Solutions</b>
Air pressure differential too high (i.e., more than 10-15 psi)	Reduce air pressure differential to 10-15 psi
Equipment on Tabletop has a high center of gravity.	Reduce air pressure differential to 5 psi. If Symptom persists, call Kinetic Systems, Inc.
VIBRA-LEVEL Servo Valve oscillating.	Call Kinetic Systems, Inc. for replacement.

## SECTION V

### Recommended Spare Parts:

While maintenance requirements for the 9100/9200 Series Vibration Isolation Table are minimal, some parts can be damaged if the system is improperly moved. In order to avoid any inconvenience, Kinetic Systems, Inc. recommends that the user maintain one or two spare parts inventory of possible replacement items. These items are listed below:

<b>MODEL NO.</b>	<b>QUANTITY</b>	<b>PART NO.</b>	<b>DESCRIPTION</b>
9101, 9102, 9211	1	130200-05	Leveling Valve
9101, 9211 (Front)	2	123168-03	Airmount (Isolator) (200#)
9102, 9211 (Rear)	2	123169-03	Airmount (Isolator) (300#)

## SECTION VI

### Replacement Isolator Installation:

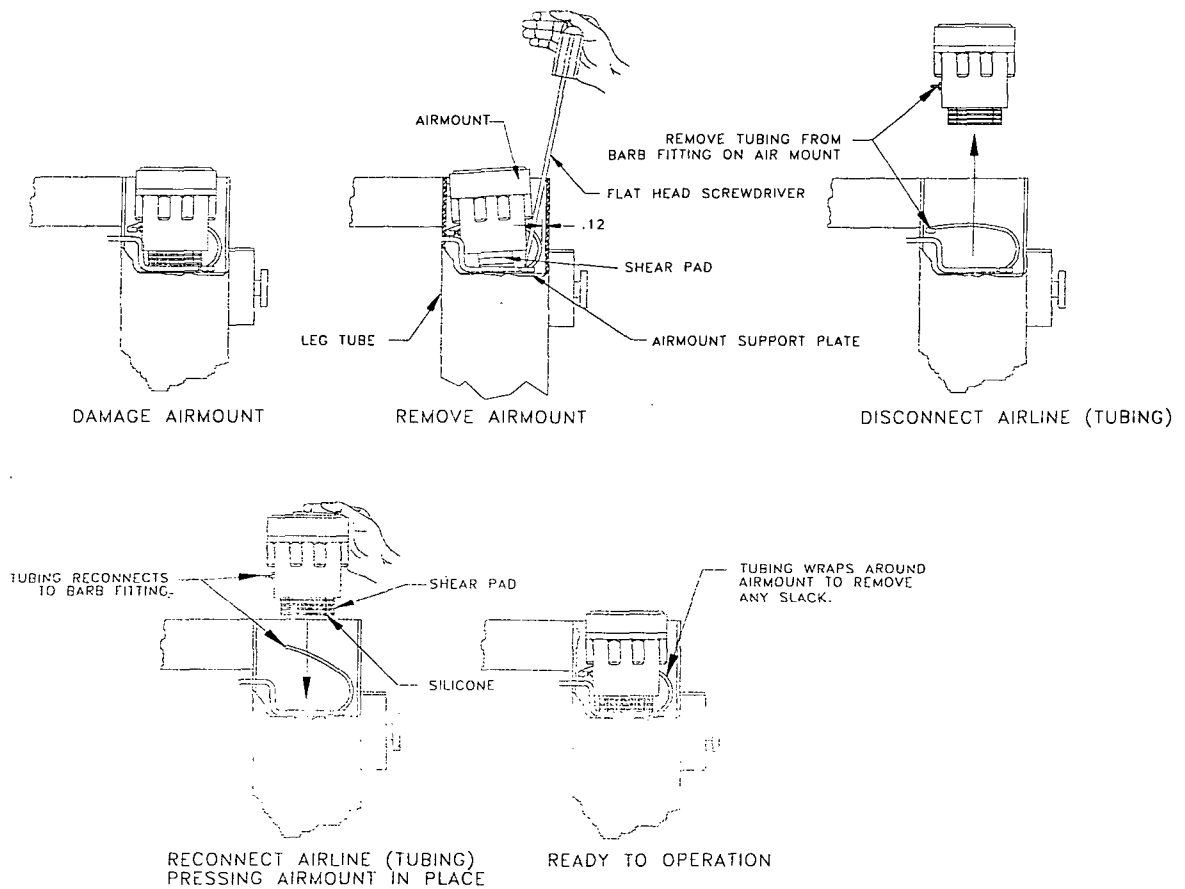
The following instructions explain how to replacement airmount (Isolator) for your 9100/9200 Series Vibraplane Optical Table.

#### Required Materials:

- Replacement Isolator (as per specification)
- Silicone rubber (RTV 732 or Equivalent)

#### Required Tools:

- Long Flat Head Screwdriver



**Fig. 13 9101/9102 and 9211 Replacement Airmount**

Prior to replacing the airmount remove the tabletop and pressurize the system. Check the airmount and all fittings for leaks. If a fitting is leaking try stopping the leak by tightening the fitting. If the leak persists depressurize the system and replace the airmount as describe below.

1. Turn off air supply and exhaust air from damaged airmount.
2. Remove airmount by using the long flat head screwdriver by gently prying from all sides of the airmount (as shown on Fig. 13).  
(*CAUTION*: Do not damage the tubing coming into the leg tube).
3. Disconnect the airline (tubing) from the side of damaged airmount.
4. Clean any dry silicone from support plate airmount seat.
5. Reconnect the airline (tubing) to the new airmount assembly and apply four small bead of silicone to bottom surface of the airmount shear pad.
6. Install new airmount assembly by pressing the airmount into support plate. Rotate the airmount clockwise to remove any slack in the tubing so that the tubing will not come in contact with leg tube. ( Do not pull tubing tight).
7. The Replacement airmount installation is now completed.



## Section VII

### Filter Regulator Installation and Operation:

#### Installation

Installation vertical position so that air flow is in direction of arrow stamped on body of unit. Before piping-in, blow out line to remove scale and other foreign matter. If pipe compound is used, apply only to male threads and just enough to make tight joints.

#### Reduced Pressure Adjustment

To unlock adjustment, pull knob up into forwardmost position. Turn knob clockwise to increase the reduced or regulated pressure and counter-clockwise to lower pressure. With relieving-type regulators, the reduced pressure follows adjustment of the screw, with non-relieving regulators adjustment for lower reduced pressure will not be obtained until the reduced pressure system is "bled-off" or until air flow starts (Refer to Fig. 14).

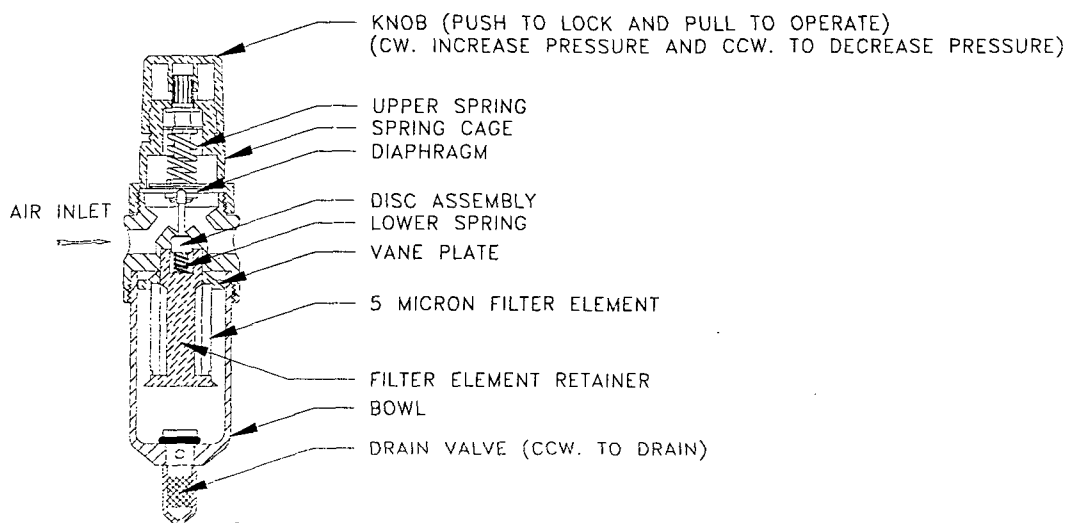


Fig. 14 Filter Regulator

#### Maintenance

To obtain best efficiency and longest periods of trouble-free operation the air supply must be kept clean, as dirt is the most common cause of erratic regulator operation. Only a few parts require occasional replacement-most trouble can be cured and prevented by a thorough and careful cleaning procedure. To clean, it is not necessary to remove unit from its piping or line. At the bottom of the bowl is a drain valve which should be periodically opened (turn clockwise) particularly when sediment is visible in bowl.

## Disassembly for Cleaning

Use diagram on reverse as a guide to disassembly. Depressurized the air line, unscrew and remove the bowl. Unscrew the filter element retainer, and let down the vane plate, disc assembly and bottom spring. If the o-ring on the disc assembly appears worn or nicked, it should be replaced. Unscrew the spring cage and remove the diaphragm appears swollen or stiff, it should be replaced. Reassemble the unit in the same order, making sure the disc assembly stem fits into the small hole in the center of the diaphragm. Tighten the spring cage and bowl slightly more than hand tight (up to 50 inch pounds torque).

Cleaning for best results clean parts with alcohol. After cleaning blow out parts including body of unit with compressed air. The filter cone should be blown out from the inside, plugging one end with finger. Plastic bowl must be cleaned with household soap only.

## Appendix

## Warranty

Equipment manufactured by Kinetic Systems, Inc. (KSI) is warranted against defective workmanship and materials for six months from date of delivery. Defective material or items will be replaced at no charge. This warranty does not include labor to remove and install the material or item in question. Material returned under Warranty will not be accepted without the prior approval and assignment of a Return Authorization Number by KSI. All returns must be shipped Freight Prepaid unless KSI authorizes otherwise. In those instances where returns must be by Motor Freight (truck), KSI will furnish the proper commodity rate classification for lowest shipping cost.



20 Arboretum Road, PO Box 414, Boston, MA 02131  
[www.kineticsystems.com](http://www.kineticsystems.com) • e-mail: [sales@kineticsystems.com](mailto:sales@kineticsystems.com)  
Tel: (617) 522-8700 • FAX (617) 522-6323 • Toll Free (800) 992-2884