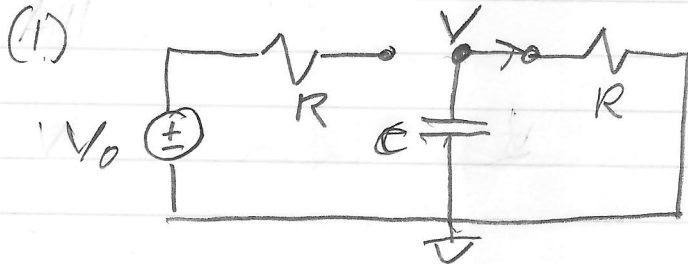
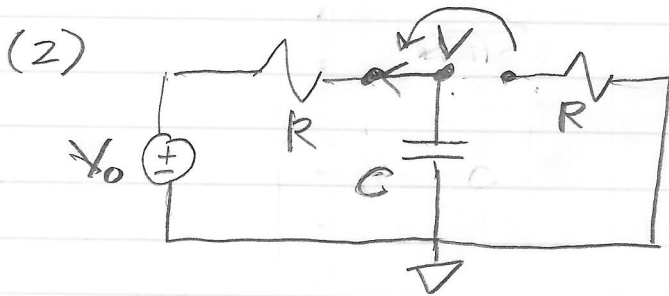


H.W. 2



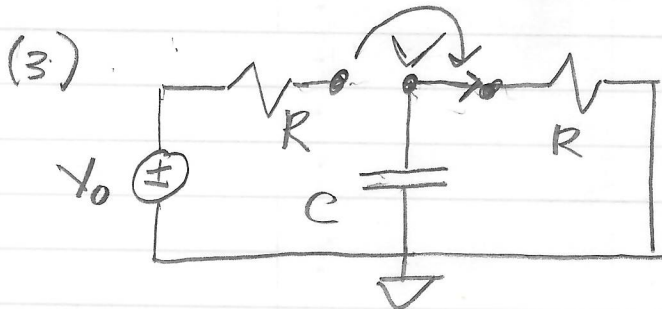
Switch closed to the right for $t < 0$

What is the voltage V for $t < 0$?



Switch is opened then closed to the left at $t = 0$

- What is V at $t = 0$?
- What is V for $t \gg RC$ (long times)?
- Write an expression for $V(t)$, $t \geq 0$.



Switch is opened then closed to the right at $t = T \gg RC$

- What is V at $t = T$ (hint - look back at problem 2b)?
- What is V for $t \gg T + RC$ (hint - look back at problem 1)?
- Write an expression for $V(t)$ with $t \geq T$.