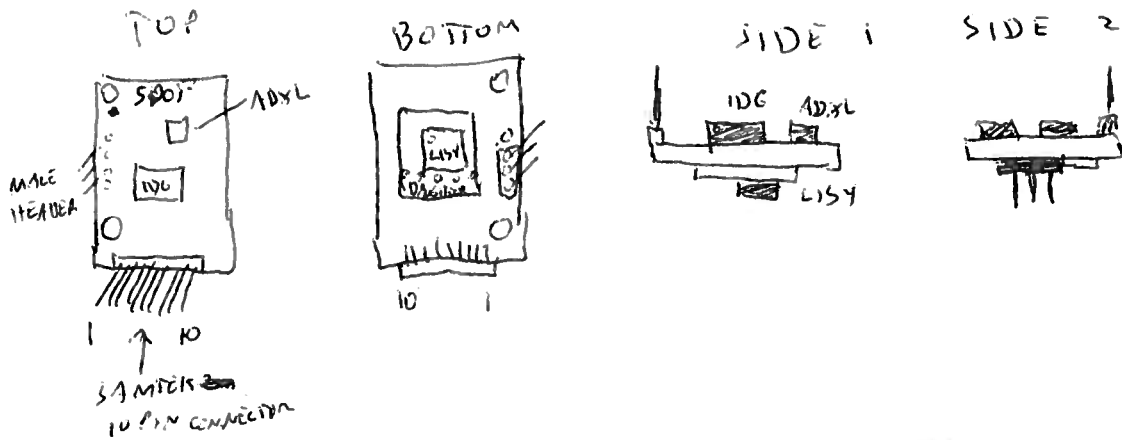


Sensor/IMU wiring Diagram

Jeff Mause
Klenfeld Lab
10/29/2010

Glue SDOF and Ardu Daughter board back to back



Wiring Diagram

Santek Connector

PIN	BOARD CONNECTION
1	SDOF - X-ACC
2	SDOF - Y-ACC
3	SDOF - Z-ACC
4	SDOF - Y-Rate
5	SDOF - X-Rate
6	Daughter - OUT
7	SDOF - VREF
8	NOT CONNECTED -
9	SDOF + DAUGHTER - 3.3V
10	SDOF + DAUGHTER - GND

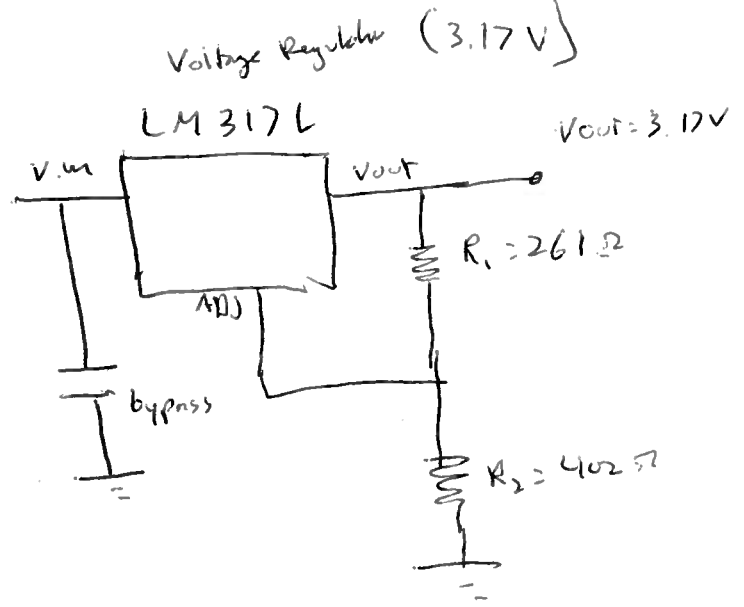
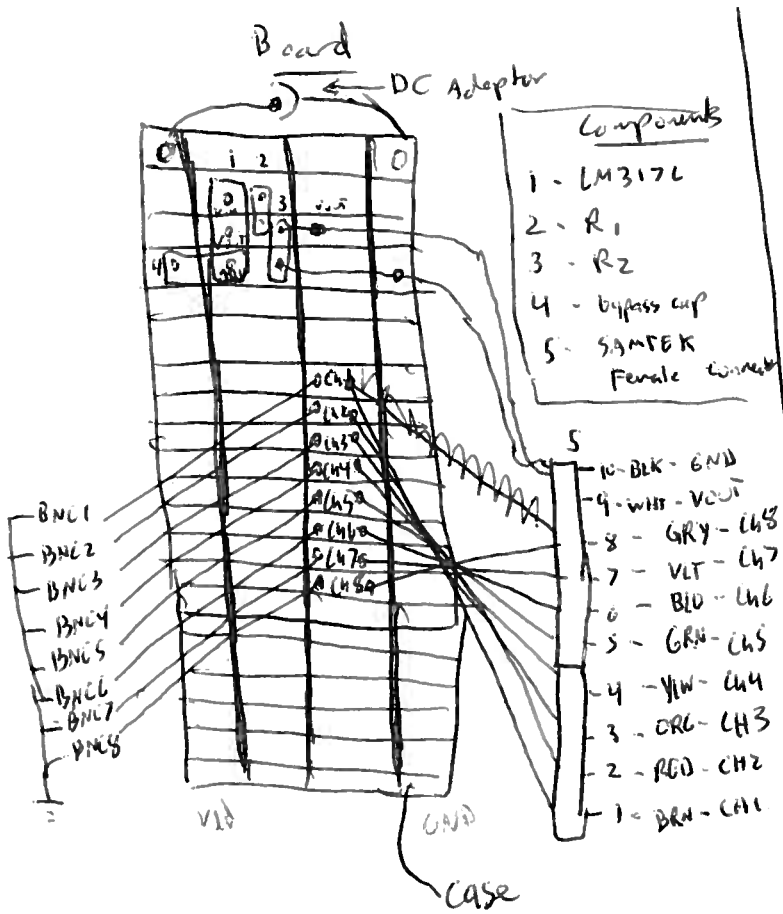
Header Connector

Connections, not used, for mounting only

PIN	BOARD CONNECTION
1	SDOF - Y4.5
2	SDOF - PTAT
3	SDOF - AZ

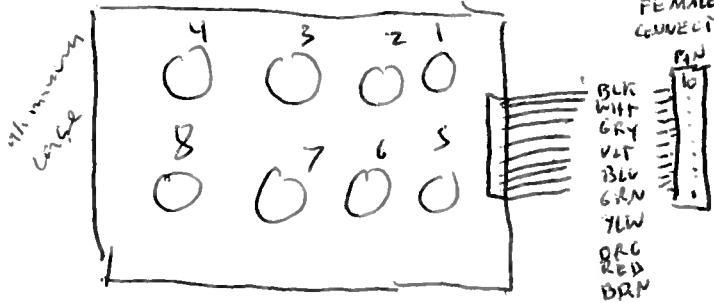
Sensor / IMU Control Box

Jeff Moon
Klemm L-6
11/16/2010

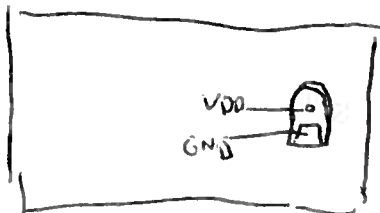


Box

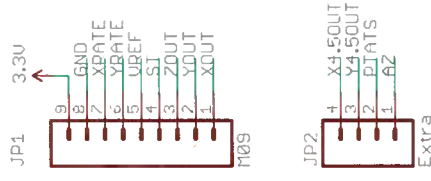
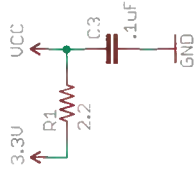
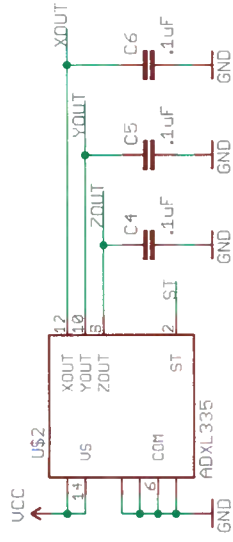
FRONT PANEL



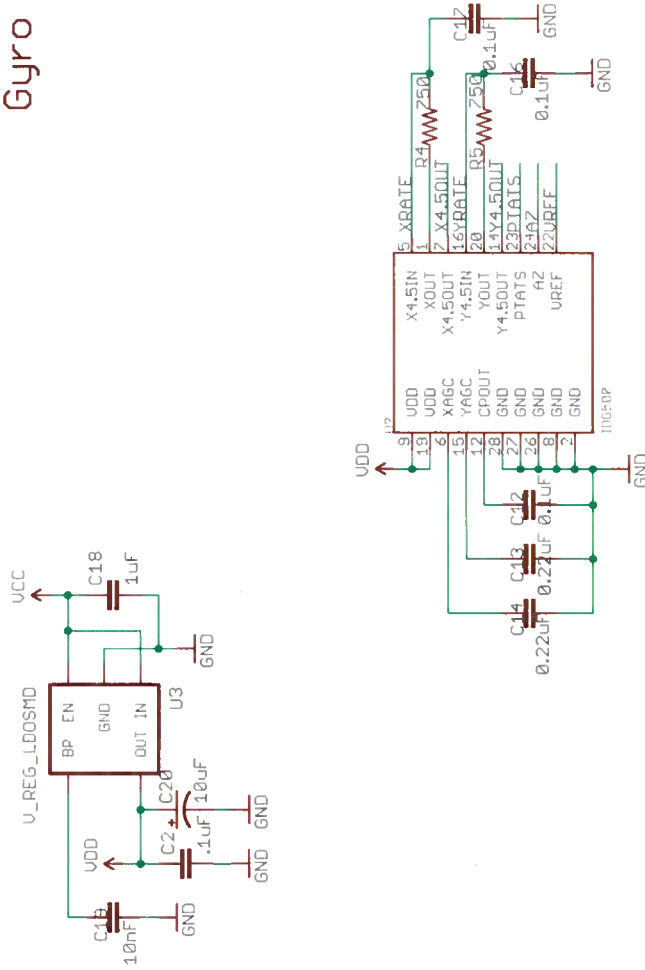
TOP PANEL



Accelerometer



Gyro

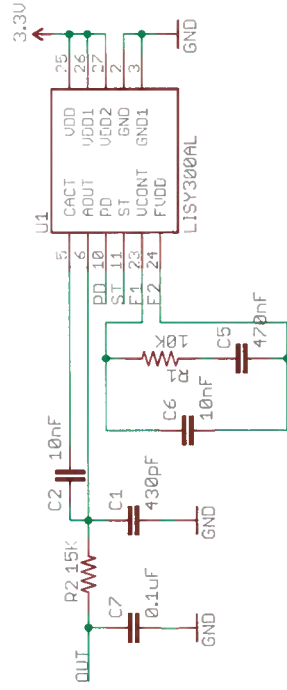
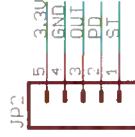
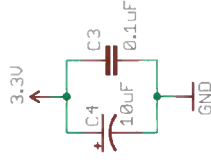


⊗ ⊗ ⊗ ⊗

TITLE: 500F - v25
 Document Number:

REU:

Date: 9/8/2009 1:57:44 PM Sheet: 1/1



Released under the Creative Commons Attribution Share-Alike 3.0 License
<http://creativecommons.org/licenses/by-sa/3.0>
 Design by: J. Muñoz and N. Seidle

TITLE: SensorBoard-Daughter-v10

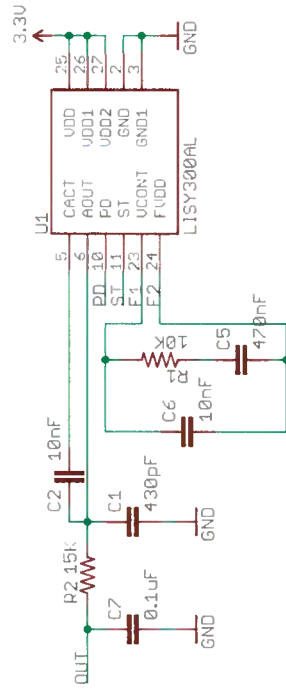
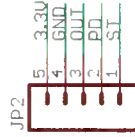
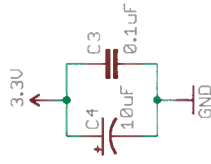
SFE

Document Number:

REU:

Date: 7/14/2009 1:34:19 PM

Sheet: 1/1



Released under the Creative Commons Attribution Share-Alike 3.0 License
<http://creativecommons.org/licenses/by-sa/3.0>
 Design by: J. Mundoz and N. Seidle

TITLE: SensorBoard-Daughter-v10

SFE

Document Number:

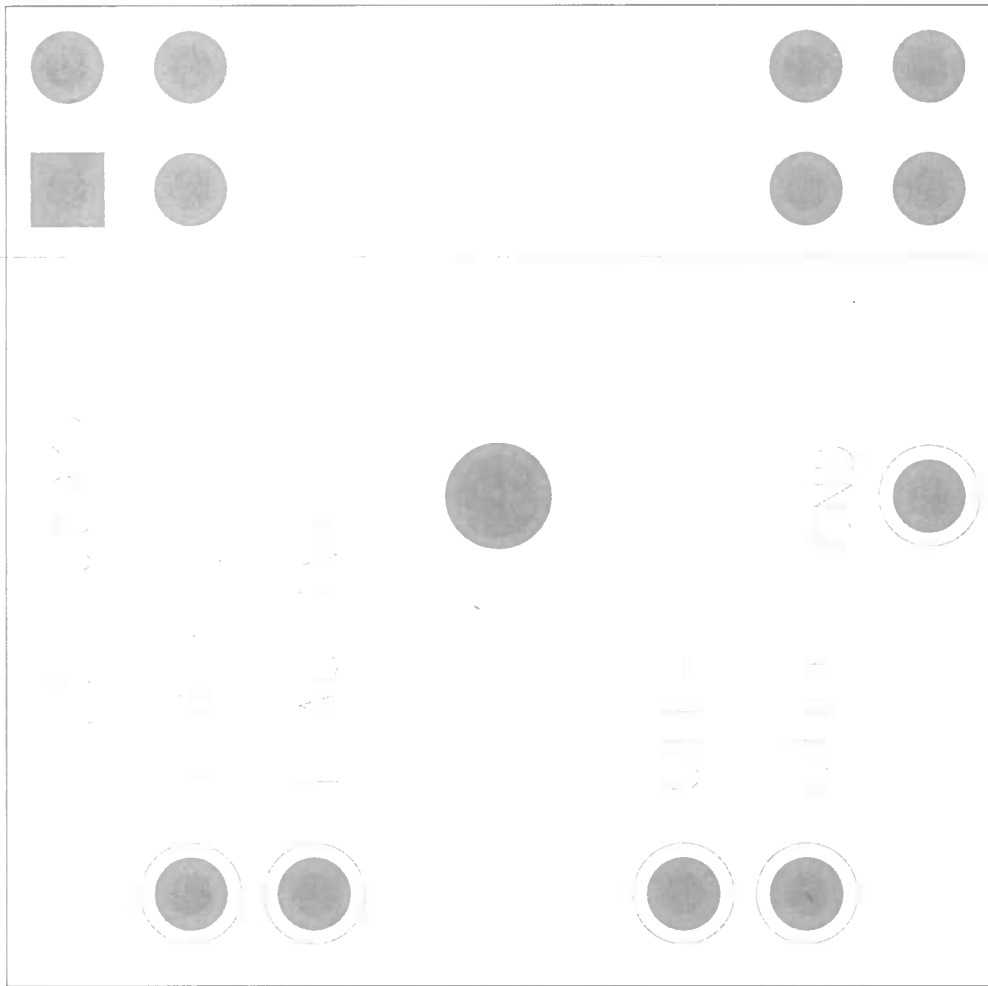
REV:

Date: 7/14/2009 1:34:19 PM

Sheet: 1/1

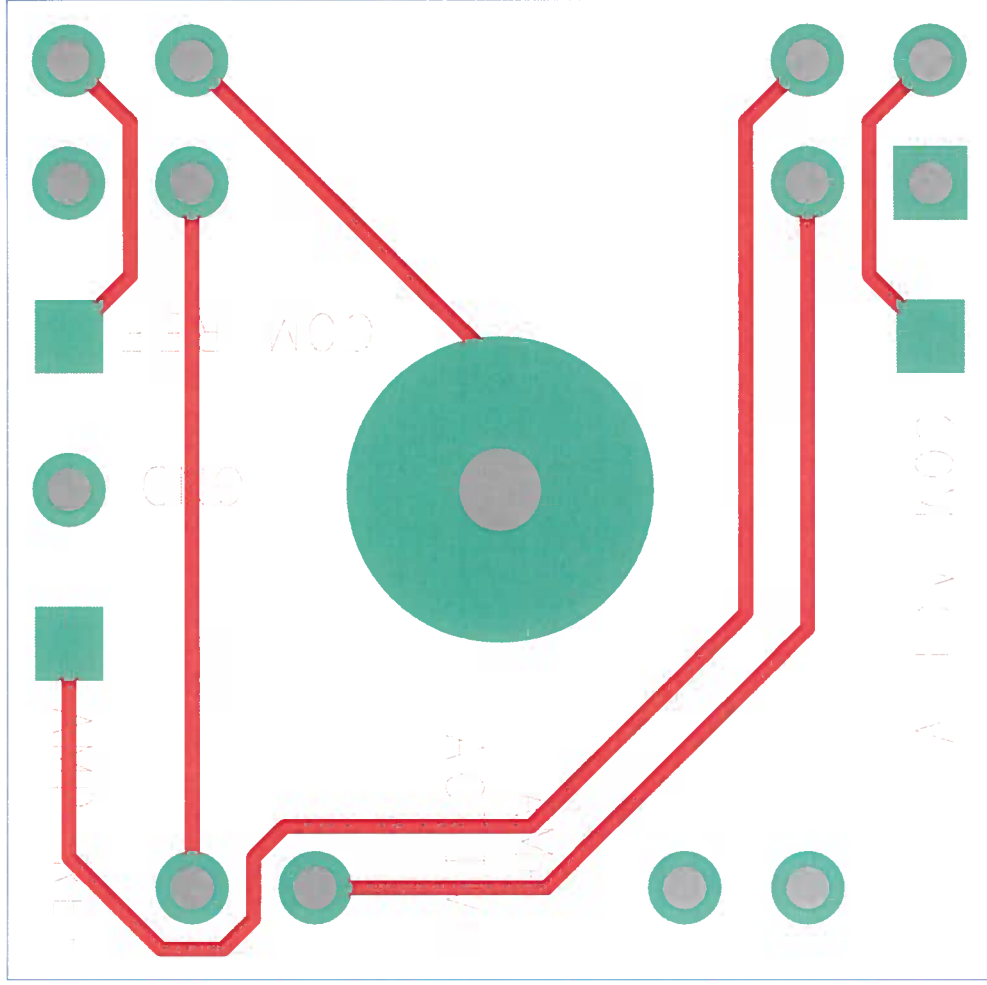
RELAY BOARD

UCSD PES 100914



4-10-77

REV 1.0

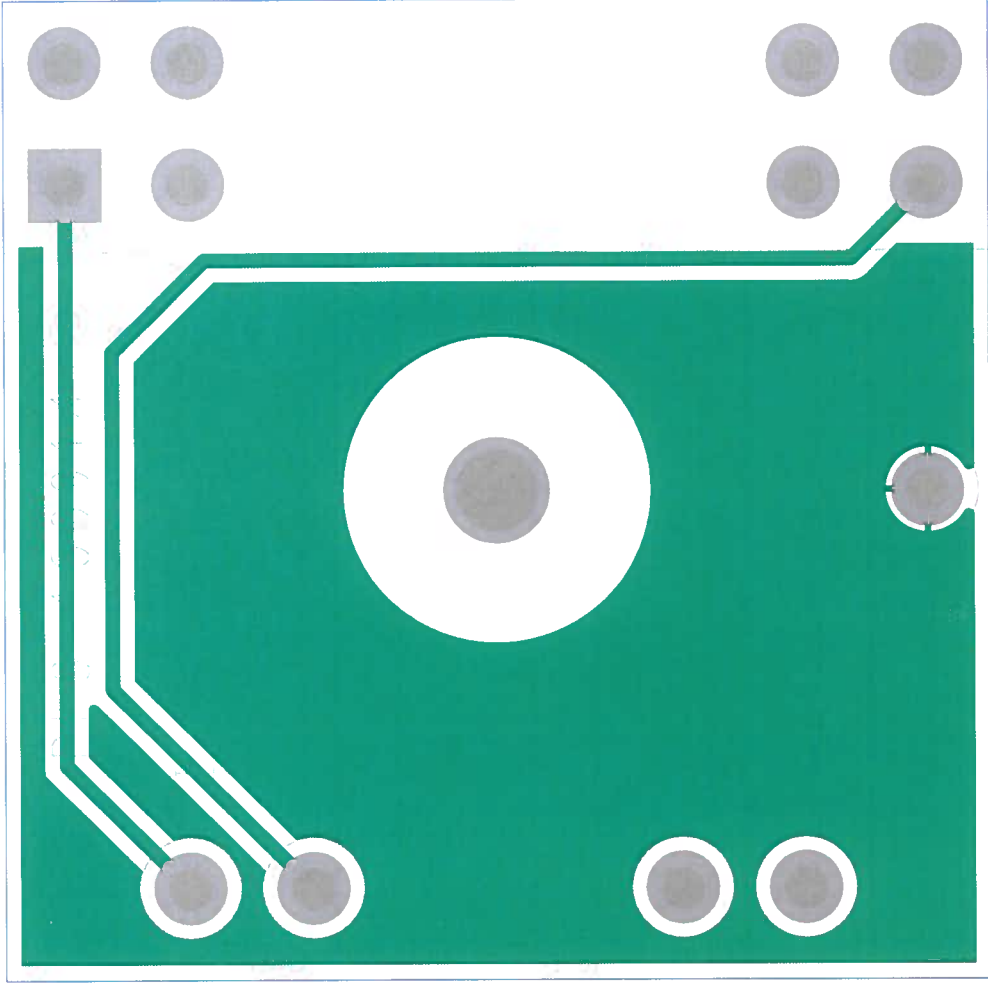


410001 2EP D22U

RELAY BOARD

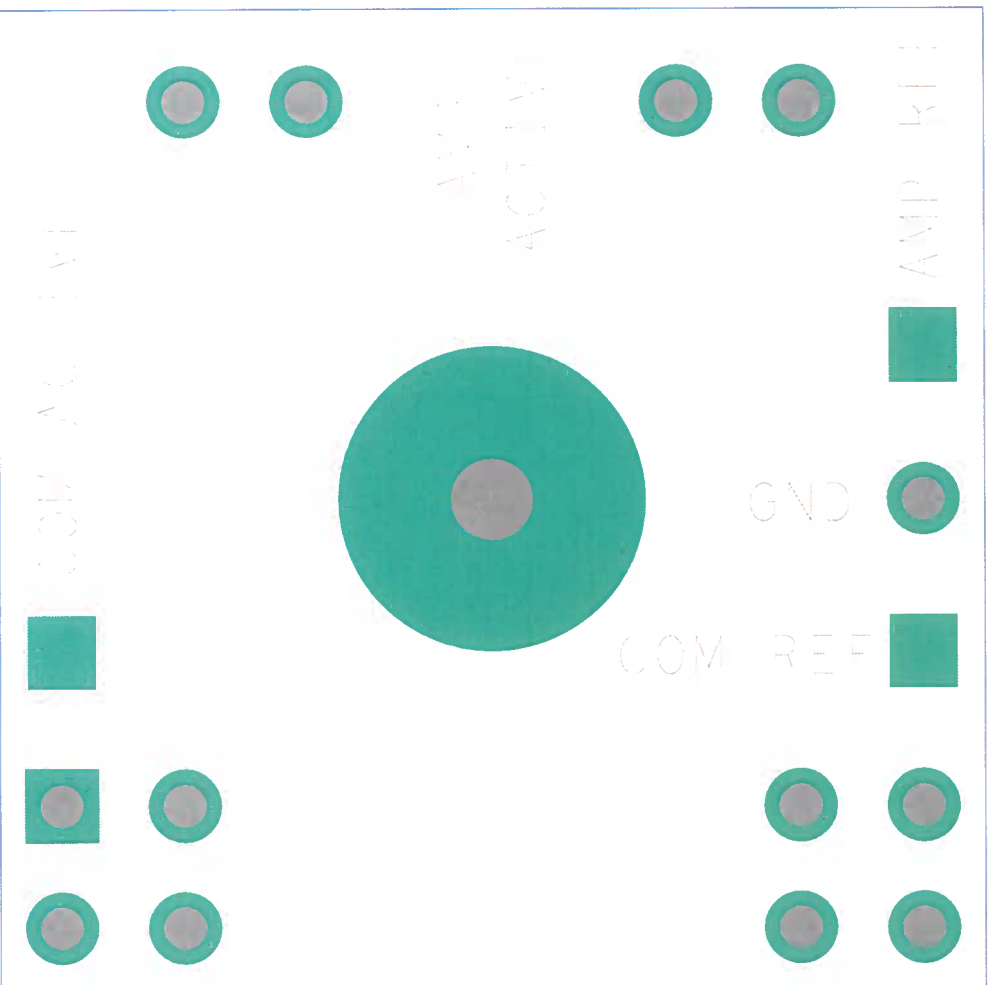
RELAY BOARD

UCSD PES 100914



950

0000



NC2D PES 100014
RELAY BOARD