

4 3 2 1

F F

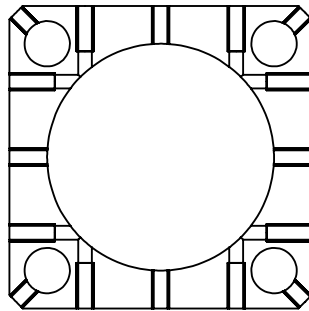
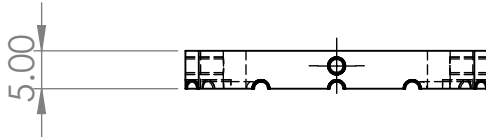
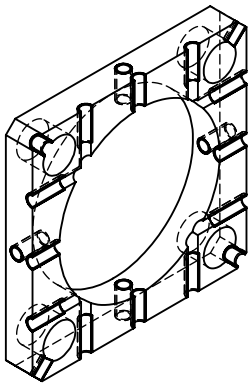
E E

D D

C C

B B

A A



Modified from LINOS Microbench, G061042000
Thickness : 10 mm → 5 mm

UNLESS OTHERWISE SPECIFIED: DIMENSIONS ARE IN MILLIMETERS SURFACE FINISH: TOLERANCES: LINEAR: ANGULAR:				FINISH:		DEBURR AND BREAK SHARP EDGES		DO NOT SCALE DRAWING		REVISION		
								Quantity: 1				
TITLE: <h1>L11 Mounting Plate</h1>												
MATERIAL: Anodized Aluminum										DWG NO. Part Drawing 17		A4
WEIGHT:										SCALE:1:1		SHEET 1 OF 1

	NAME	SIGNATURE	DATE								
DRAWN											
CHK'D											
APPV'D											
MFG											
Q.A											

4 3 2 1